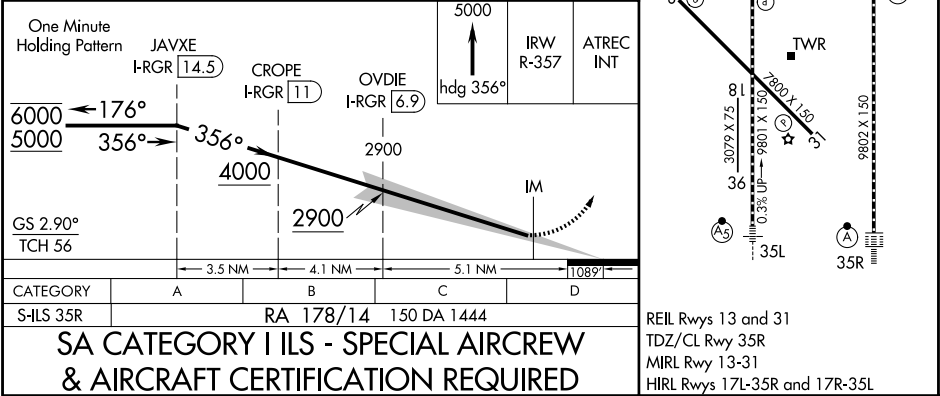
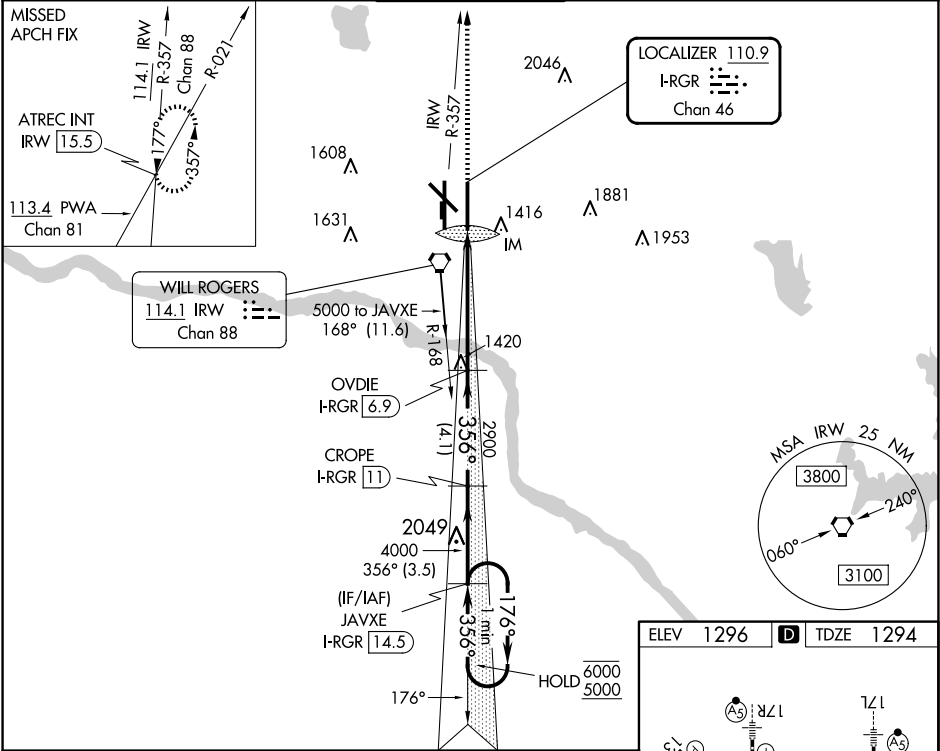


LOC/DME I-RGR <b>110.9</b> Chan <b>46</b>	APP CRS <b>356°</b>	Rwy Idg <b>9802</b> TDZE <b>1294</b> Apt Elev <b>1296</b>	<b>ILS RWY 35R (SA CAT I)</b> OKC WILL ROGERS INTL (OKC)
---	------------------------	---	---

DME required.	ALSIF-2	MISSED APPROACH: Climb to 5000 on heading 356° and on IRW VORTAC R-357 to ATREC INT/IRW 15.5 DME and hold, continue climb-in-hold to 5000.
ASR Simultaneous approach authorized. Requires specific OPSPEC, MSPEC, or LOA approval and use of HUD to DH.		

D-ATIS <b>125.85</b>	OKE CITY APP CON <b>124.6 266.8</b>	ROGERS TOWER <b>119.35 269.45</b>	GND CON <b>121.9 348.6</b>	CLNC DEL <b>124.35</b>
-------------------------	--	--------------------------------------	-------------------------------	---------------------------



SC-1, 07 AUG 2025 to 04 SEP 2025

SC-1, 07 AUG 2025 to 04 SEP 2025