

VOR/DME RWY 13

| | | |
|-------------|------------|---------|
| VOR/DME PWA | APCH CRS | Rwy Idg |
| 113.4 | 110° | 10,000 |
| Chan 81 | TDZE | 1241 |
| | Arprt Elev | 1291 |

[USAF]

TINKER AFB (KTIK)

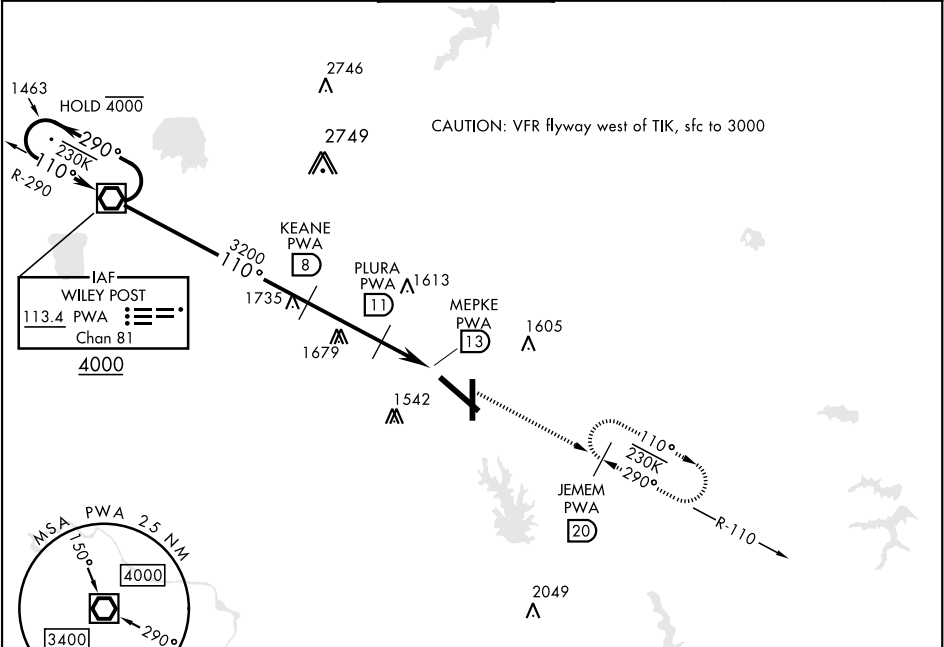
▼ * When ALS inop, increase CAT AB RVR to 50 and vis to 1 mile, CAT C vis to 1¼ miles, CAT D vis to 2 miles, CAT E vis to 2¼ miles.
** CAT E Circling not authorized in sector S of Rwy 13-31 and W of Rwy 18-36.

SALS

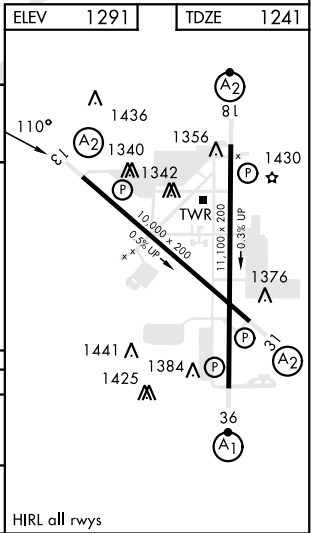
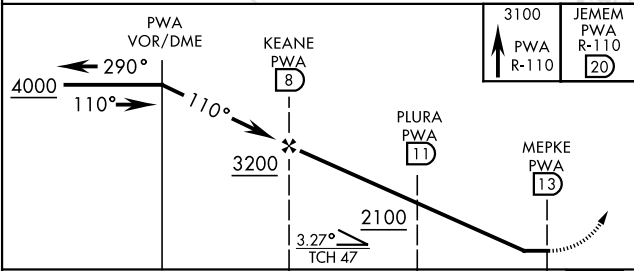
A2

MISSED APPROACH: Climb to 3100 direct to PWA R-110/20 DME (JEMEM) and hold.

| | | | | | |
|--------|------------------|---------------|-------------|-------------|-----|
| ATIS ★ | OKE CITY APP CON | TOWER | GND CON | CLNC DEL | ASR |
| 270.1 | 124.2 336.4 | 124.45 251.05 | 121.8 275.8 | 119.7 335.8 | |



| | | |
|----------------------------|-----------|-----------|
| EMERG SAFE ALT 100 NM 4700 | ELEV 1291 | TDZE 1241 |
|----------------------------|-----------|-----------|



| CATEGORY | A | B | C | D | E |
|------------|---------------------|---|-------------------------|-------------------------|-------------------------|
| S-13 * | 1900/40 659 (700-¾) | | 1900-1½ 659 (700-1½) | 1900-1¾ 659 (700-1¾) | 1900-2 659 (700-2) |
| CIRCLING** | 1900-1 609 (700-1) | | 1900-1¾ 609 (700-1¾) | 1980-2¼ 689 (700-2¼) | 2040-2¾ 749 (800-2¾) |

HIRL all rwys

VOR/DME RWY 13

SC-1, 07 AUG 2025 to 04 SEP 2025

SC-1, 07 AUG 2025 to 04 SEP 2025