

OKLAHOMA CITY, OKLAHOMA

TACAN Z RWY 36

TACAN TIK Chan 105	APCH CRS 359°	Rwy ldg 11,100 TDZE 1291 Arpt Elev 1291
-----------------------	------------------	---

[USAF]

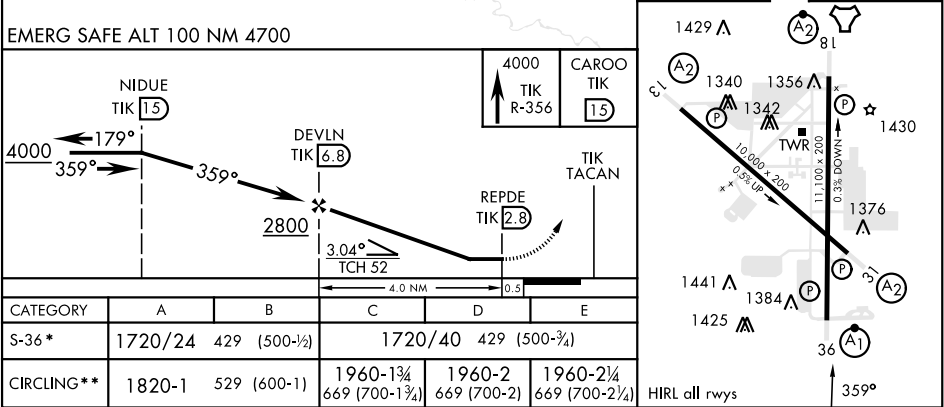
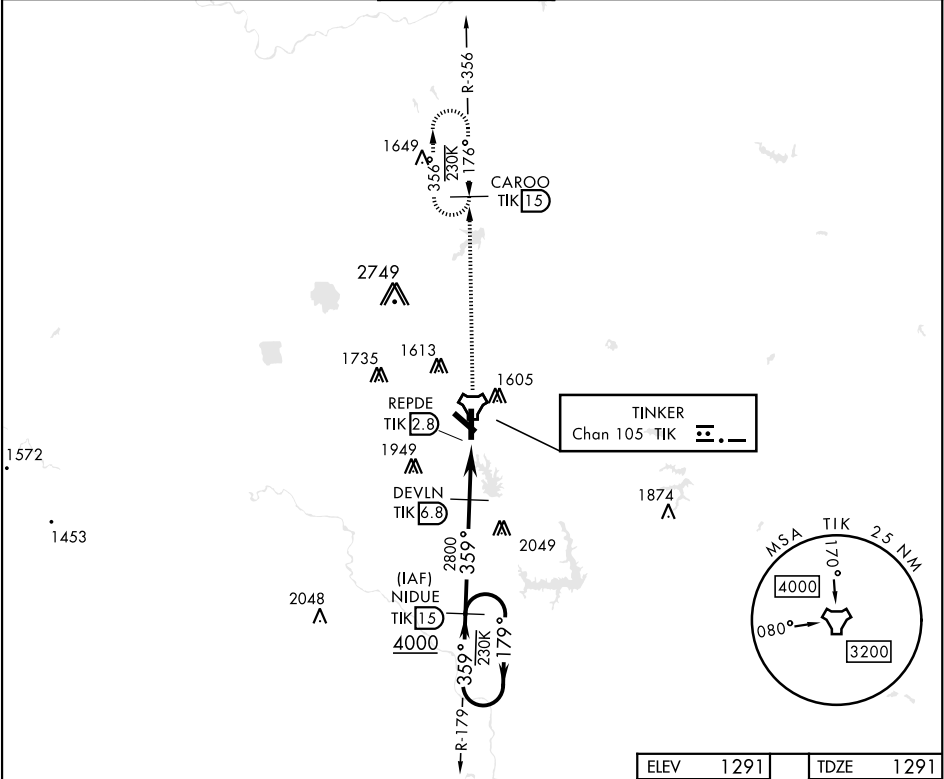
TINKER AFB (KTIK)

▼ * When ALS inop, increase CAT AB RVR to 50 and vis to 1 mile, CAT CDE increase vis by ½ mile.
** CAT E Circling not authorized in sector S of Rwy 13-31 and W of Rwy 18-36. Circling NA to Rwy 18.



MISSED APPROACH: Climb to 4000 on TIK
TACAN R-356 to CAROO and hold.

ATIS ★ 270.1	OKE CITY APP CON 120.45 288.325	TOWER 124.45 251.05	GND CON 121.8 275.8	CLNC DEL 119.7 335.8	ASR
-----------------	------------------------------------	------------------------	------------------------	-------------------------	-----



OKLAHOMA CITY, OKLAHOMA 35°25'N-97°23'W TINKER AFB (KTIK)

Amdt 3 13JUN24 TACAN Z RWY 36

SC-1, 07 AUG 2025 to 04 SEP 2025

SC-1, 07 AUG 2025 to 04 SEP 2025