

TACAN Z RWY 18

TACAN TIK Chan <b>105</b>	APCH CRS <b>176°</b>	Rwy Idg <b>11,100</b> TDZE <b>1267</b> Arpt Elev <b>1291</b>
------------------------------	-------------------------	--

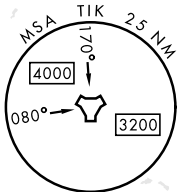
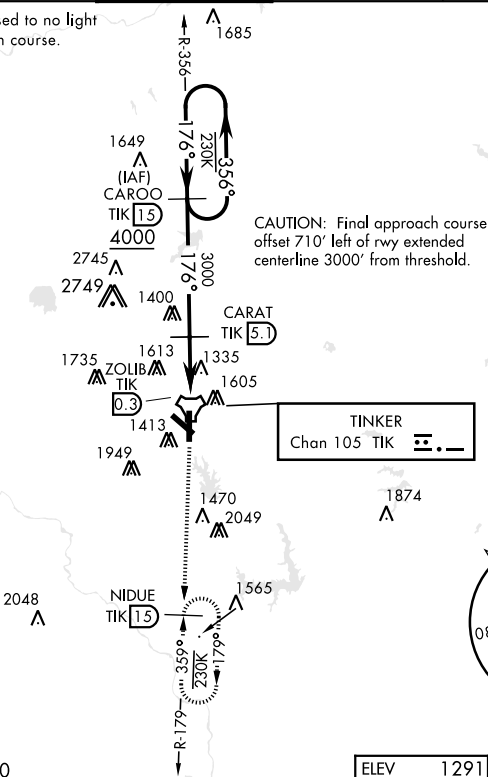
[USAF]

TINKER AFB (KTIK)

<b>▼</b> * CAT E Circling NA in sector S of Rwy 13-31 and W of Rwy 18-36. Circling NA to Rwy 18.	SALSF <b>(A2)</b>	MISSED APPROACH: Climb to 4000 on TIK TACAN R-179 to NIDUE and hold. Missed approach requires use of RNAV or ATC monitoring.
--	----------------------	--

ATIS ★ <b>270.1</b>	OKE CITY APP CON <b>124.2 336.4</b>	TOWER <b>124.45 251.05</b>	GND CON <b>121.8 275.8</b>	CLNC DEL <b>119.7 335.8</b>	ASR
------------------------	--	-------------------------------	-------------------------------	--------------------------------	-----

Straight-in minimum visibility increased to no light minimum due to offset final approach course.



EMERG SAFE ALT 100 NM 4700

Diagram showing CAROO TIK 15, CARAT TIK 5.1, TIK, TACAN, ZOLIB TIK 0.3, and distances: 356°, 176°, 176°, 3000, 2.87°, TCH 51, 4.8 NM, 0.7.

Diagram showing TIK 179, NIDUE TIK 15, and TIK 176°.

Diagram showing TIK 176°, 1428, 1340, 1356, 1342, 1430, 1376, 1441, 1425, 1384, 36, 11-100 x 200, 10,000 x 200, 0.5% UP, 10.3% UP.

CATEGORY	A	B	C	D	E
S-18	1720/55 453 (500-1)		1720-1 453 (500-1 1/2)		
CIRCLING*	1820-1 529 (600-1)	1840-1 549 (600-1)	1960-1 669 (700-1 1/4)	1960-2 669 (700-2)	1960-2 1/4 669 (700-2 1/4)

HIRL all rwys

TACAN Z RWY 18