

APCH CRS	Rwy Idg	11,100
356°	TDZE	1291
	Arpt Elev	1291

- (USAF)

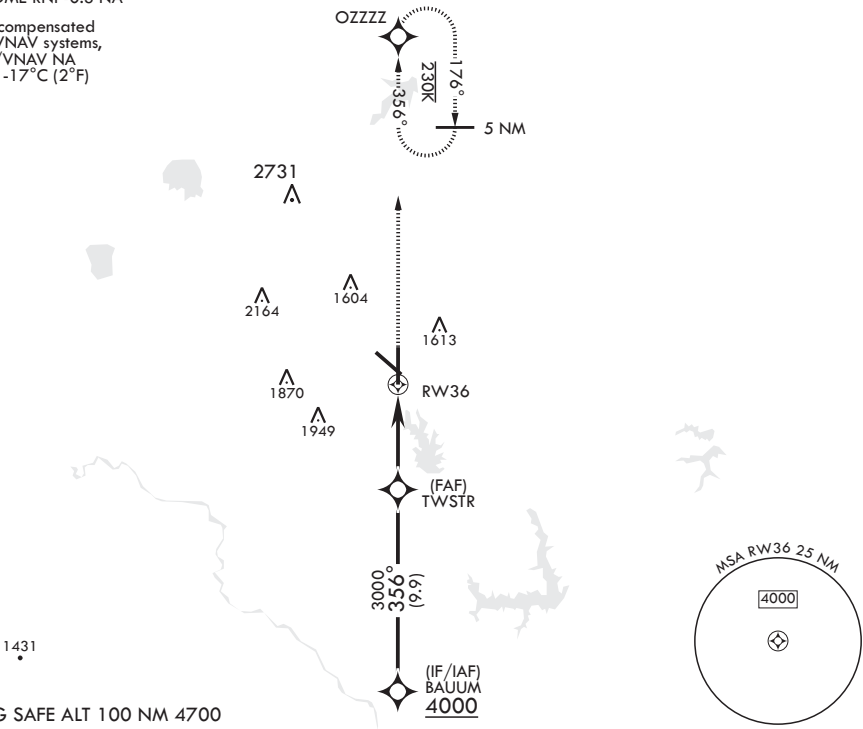
TINKER AFB (KTIK)

<p>▼ * Cat E Circling not authorized in sector S of Rwy 13-31 and W of Rwy 18-36.</p>	<p>ALSIF-1</p> 	<p>MISSED APPROACH: Climb to 4000 direct OZZZ waypoint and hold.</p>
---------------------------------------------------------------------------------------	--------------------------------------------------------------------------------------------------	----------------------------------------------------------------------

ATIS★ 270.1	OKE CITY APP CON/DEP CON 124.2 336.4	TOWER 124.45 251.05	GND CON 121.8 275.8	CLNC DEL 119.7 335.8	ASR
----------------	-----------------------------------------	------------------------	------------------------	-------------------------	-----

DME/DME RNP-0.3 NA

For uncompensated Baro-VNAV systems, LNAV/VNAV NA below -17°C (2°F)



EMERG SAFE ALT 100 NM 4700

BAUUM

4000

GP 3.00°
TCH 50

VGSI and descent
angles not coincident.

4000

OZZZ

ELEV 1291

TDZE 1291

356°

TWSTR

3000

1.3 NM to
RW36

RW36

5.1 NM

81

1340

1342

TWR

10,000 × 200

0.3% DOWN

11,100 × 200

0.3% UP

1376

1430

BCN

1441

1384

1425

36

356°

HIRL all rwys

CATEGORY	A	B	C	D	E
LNAV/VNAV DA	1739/53		448	(500-1)	
LNAV MDA	1740/24	449 (500-½)	1740/45	449	(500-¾)
CIRCLING*	1820-1	529 (600-1)	2000-2 709 (800-2)	2040-2½ 749 (800-2½)	2040-2¾ 749 (800-2¾)