

RNAV (GPS) RWY 18

APCH CRS 176°	Rwy Idg THRE Arpt Elev	11,100 1260 1291
------------------	------------------------------	------------------------

- (USAF)

TINKER AFB (KTIK)

T* Cat E Circling not authorized in sector S of Rwy 13-31 and W of Rwy 18-36.

SALSF

MISSED APPROACH: Climb to 4000 direct WTCH
waypoint and hold.

ATIS★
270.1

OKE CITY APP CON/DEP CON
124.2 336.4

TOWER
124.45 251.05

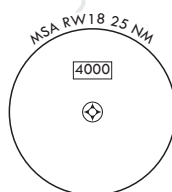
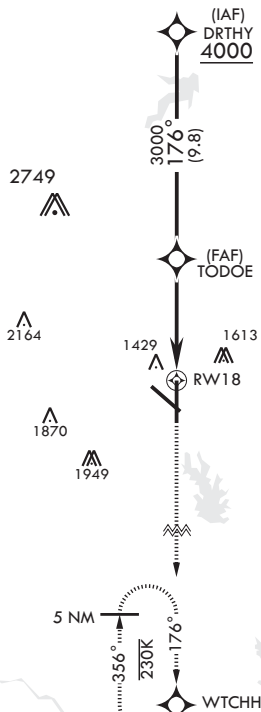
GND CON
121.8 275.8

CLNC DEL
119.7 335.8

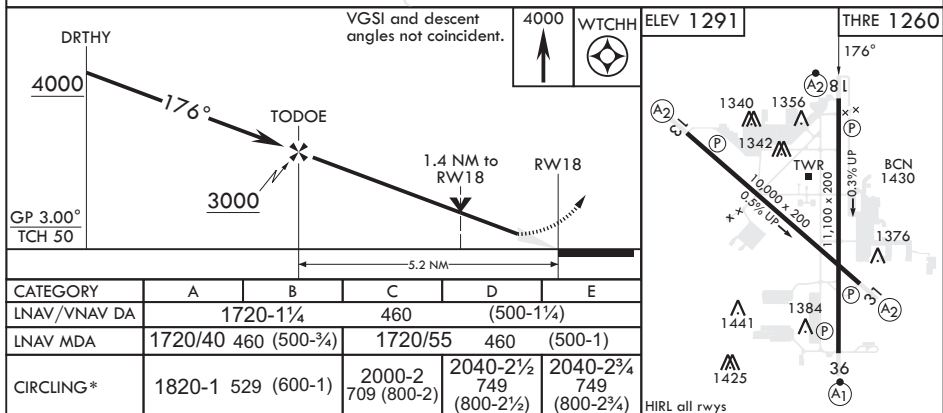
ASR

DME/DME RNP-0.3 NA

For uncompensated
Baro-VNAV systems,
LNAV/VNAV NA
below -17°C (2°F)



EMERG SAFE ALT 100 NM 4700



OKLAHOMA CITY, OKLAHOMA

35°25'N - 97°23'W

TINKER AFB (KTIK)

Orig 13JUN24

RNAV (GPS) RWY 18