

LOC I-TIK	APCH CRS	Rwy Idg
109.5	357°	11,100
		TDZE
		1291
		Arprt Elev
		1291

[USAF]

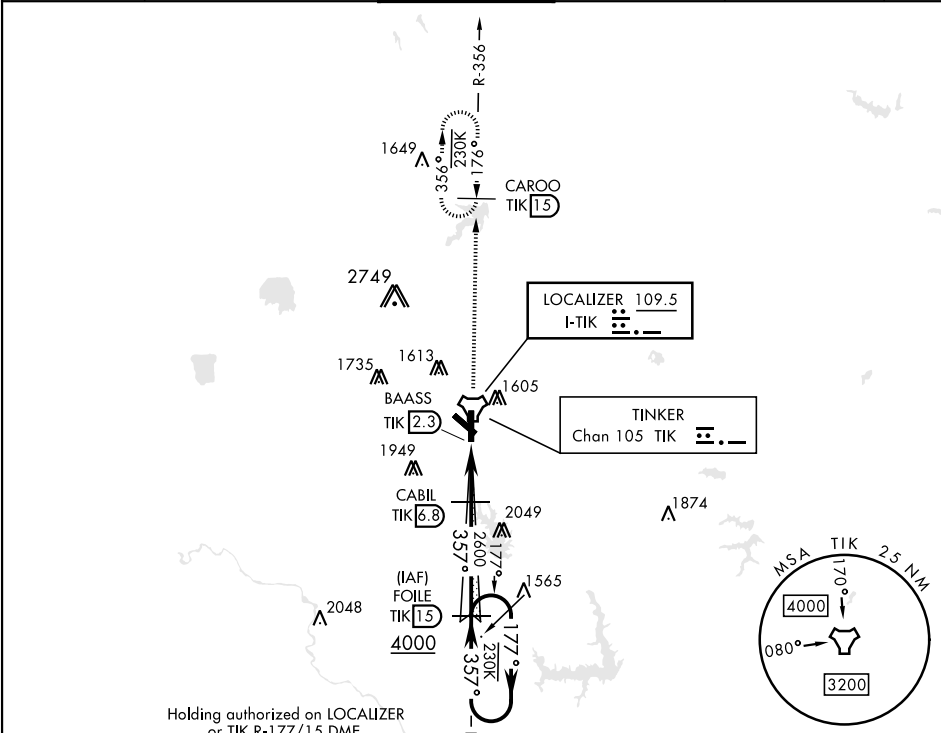
TINKER AFB (KTIK)

ILS or LOC/DME Z RWY 36

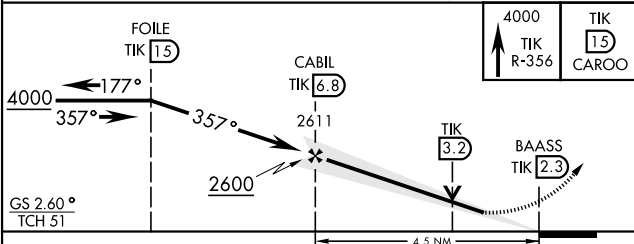
▼ * When ALS inop, increase CAT ABC RVR to 50 and vis to 1 mile, CAT DE RVR to 60 and vis to 1¼ mile.
** CAT E Circling NA to Rwy 18 and in sector S of Rwy 13-31 and W of Rwy 18-36.

ALSF-1
MISSED APPROACH: Climb to 4000 on TIK TACAN R-356 to CAROO and hold.

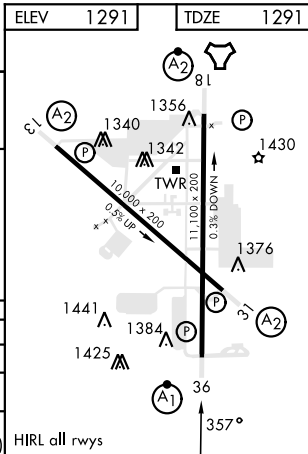
ATIS ★	OKE CITY APP CON	TOWER	GND CON	CLNC DEL	ASR
270.1	120.45 288.325	124.45 251.05	121.8 275.8	119.7 335.8	



EMERG SAFE ALT 100 NM 4700



CATEGORY	A	B	C	D	E
S-ILS 36	1491/24	200	(200-½)		
S-LOC 36 *	1680/24	389 (400-½)	1680/35	389 (400-¾)	
CIRCLING **	1820-1 529 (600-1)	1840-1 549 (600-1)	1960-1¾ 669 (700-1¾)	1960-2 669 (700-2)	1960-2¼ 669 (700-2¼)



ILS or LOC/DME Z RWY 36

SC-1, 07 AUG 2025 to 04 SEP 2025

SC-1, 07 AUG 2025 to 04 SEP 2025