
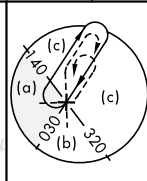
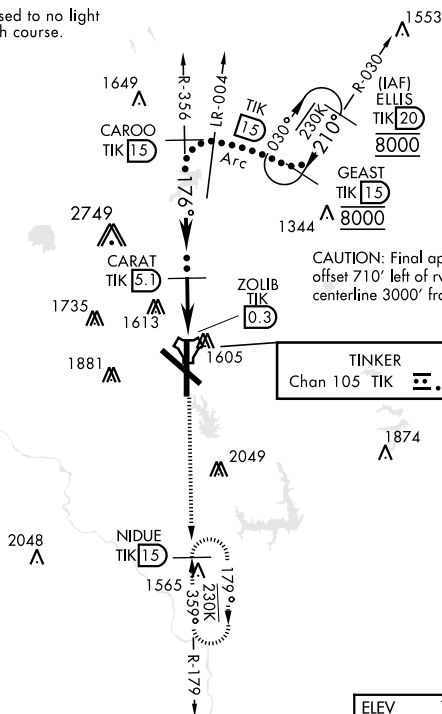


HI-TACAN Y RWY 18

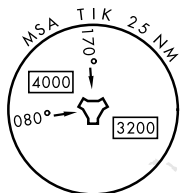
TACAN TIK Chan 105		APCH CRS 176°	Rwy Idg 11,100 TDZE 1267 Arpt Elev 1291	[USAF]	TINKER AFB (KTIK)		
▼ * CAT E circling not authorized in sector S of Rwy 13-31. Circling not authorized to Rwy 18.				SALS 	† MISSED APPROACH: Climb to 4000 on TIK TACAN R-179 to NIDUE and hold.		
ATIS ★ 270.1	OKE CITY APP CON 124.2 336.4		TOWER 124.45 251.05		GND CON 121.8 275.8	CLNC DEL 119.7 335.8	ASR

† Missed approach requires use of RNAV or ATC monitoring.

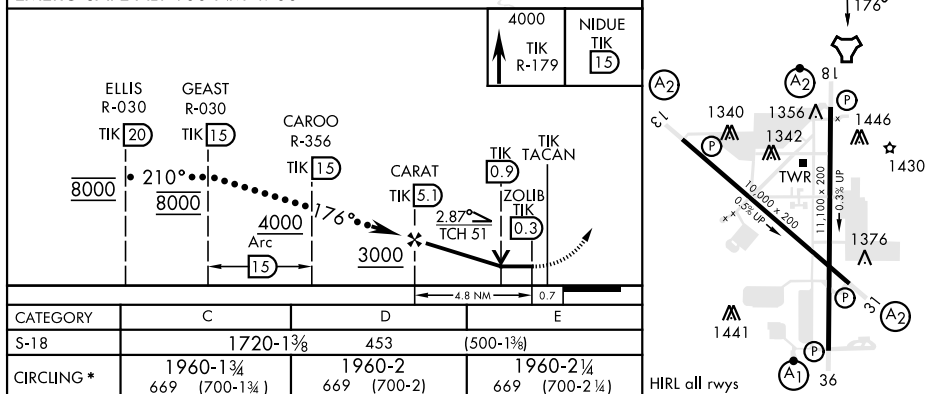
Straight-in minimum visibility increased to no light minimum due to offset final approach course.



CAUTION: Final approach course offset 710' left of rwy extended centerline 3000' from threshold.



EMERG SAFE ALT 100 NM 4700



OKLAHOMA CITY, OKLAHOMA

35°25'N-97°23'W

TINKER AFB (KTIK)

Amdt 5 20APR23

HI-TACAN Y RWY 18