

VORTAC IRW <b>114.1</b> Chan <b>88</b>	APP CRS <b>300°</b>	Rwy Idg TDZE Apt Elev <b>N/A</b> <b>N/A</b> <b>1354</b>
--	------------------------	--

VOR-B

CLARENCE E PAGE MUNI (R/C/E)

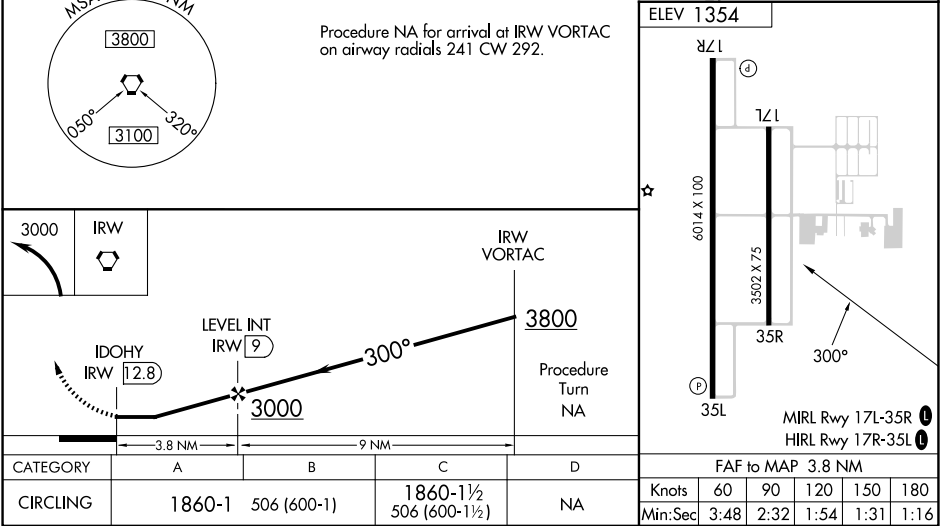
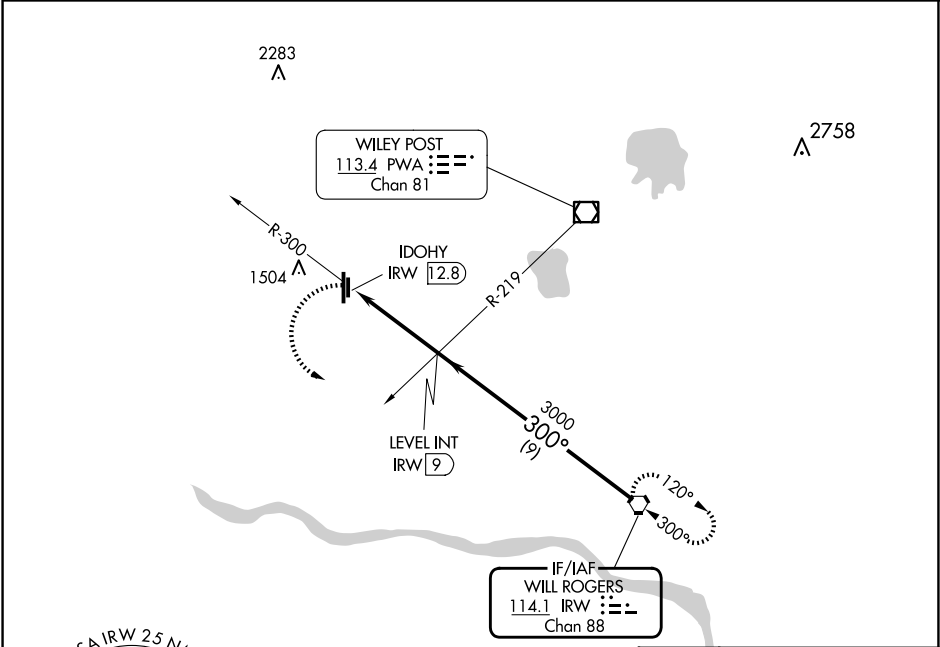
▼

▲

When local altimeter setting not received, use Wiley Post altimeter setting and increase all MDA 40 feet.

MISSED APPROACH: Climbing left turn to 3000 direct IRW VORTAC and hold.

AWOS-3 <b>125.05</b>	OKE CITY APP CON <b>124.6 266.8</b>	UNICOM <b>123.0 (CTAF) 0</b>
-------------------------	--	---------------------------------



SC-1, 07 AUG 2025 to 04 SEP 2025

SC-1, 07 AUG 2025 to 04 SEP 2025