

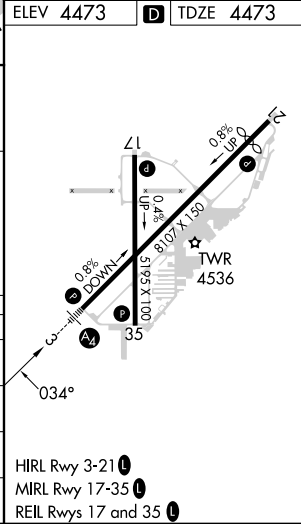
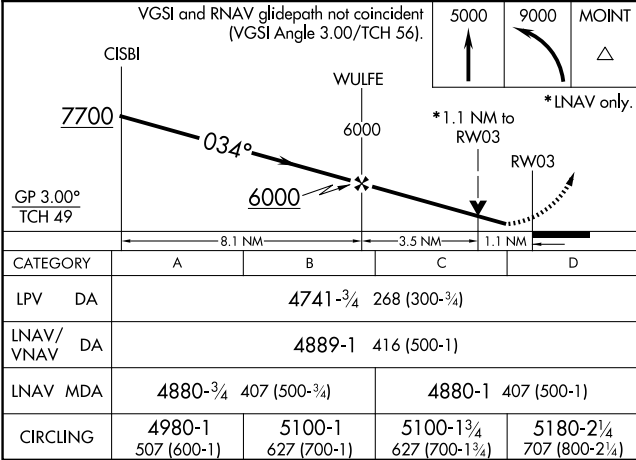
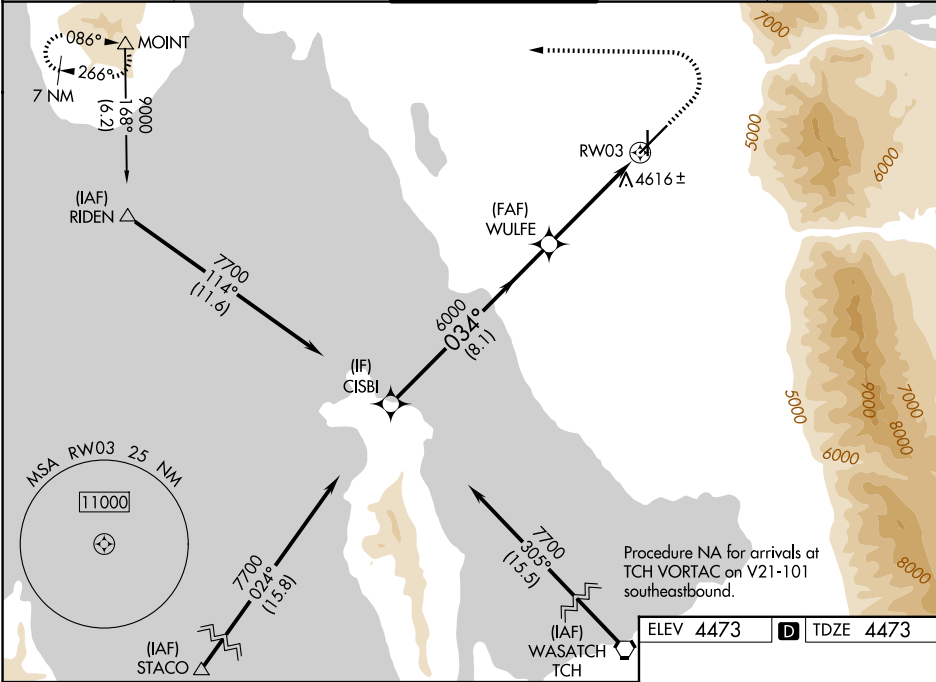
WAAS CH <b>65620</b> <b>W03A</b>	APP CRS <b>034°</b>	Rwy Ldg <b>7253</b> TDZE <b>4473</b> Apt Elev <b>4473</b>
--	------------------------	---

RNAV (GPS) RWY 3

OGDEN-HINCKLEY (OGD)

RNP APCH. ▼ Baro-VNAV and VDP NA when using Hill AFB altimeter setting. For uncompensated Baro-VNAV systems, LNAV/VNAV NA below -17°C or above 50°C. When local altimeter setting not received, use Hill AFB altimeter setting. Circling NA for Cats C and D east of Rwy 21 and 35. For Inop ALS, increase LPV all Cats visibility to ¾ SM, increase LNAV/VNAV all Cats and LNAV Cat C/D visibility to 1 ½ SM.	MALS M 2	MISSED APPROACH: Climb to 5000 then climbing left turn to 9000 direct MOINT and hold, continue climb-in-hold to 9000.
---	----------------	---

ATIS <b>125.55</b>	SALT LAKE CITY APP CON <b>121.1</b>	OGDEN TOWER* <b>118.7 (CTAF) 0 253.5</b>	GND CON <b>121.7</b>	UNICOM <b>122.95</b>
-----------------------	--	---	-------------------------	-------------------------



SW-4, 07 AUG 2025 to 04 SEP 2025

SW-4, 07 AUG 2025 to 04 SEP 2025