

TACAN HIF Chan 49	APCH CRS 131°	Rwy ldg TDZE Arpt Elev	13,500 4786 4789
----------------------	------------------	------------------------------	------------------------

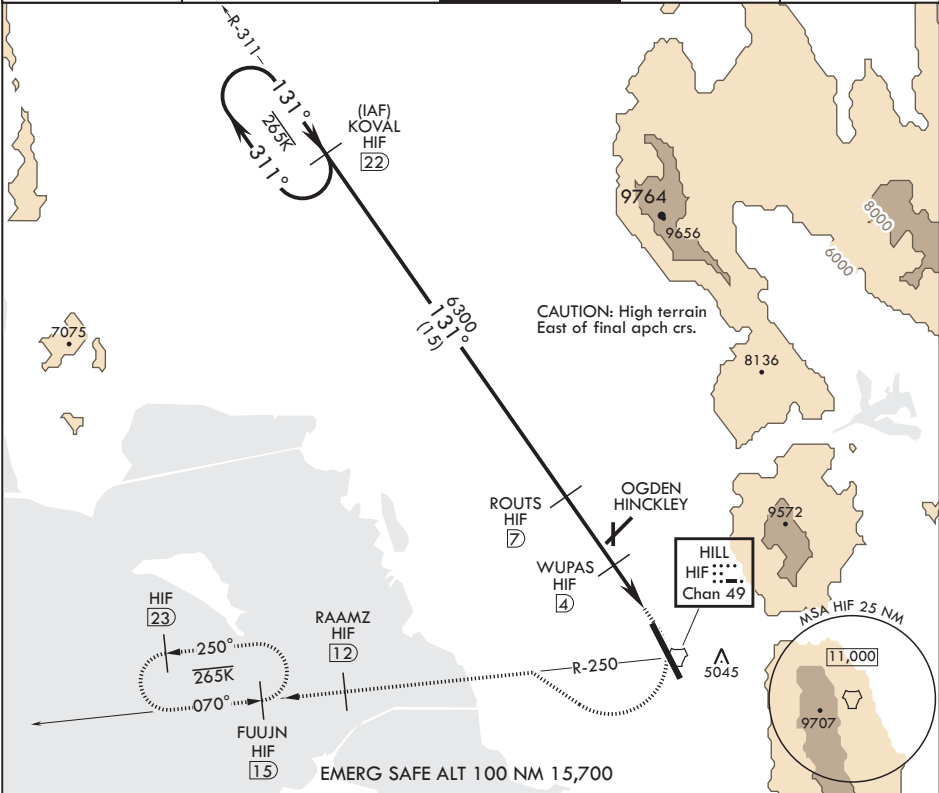
AL-296 (USAF)

HILL AFB (KHIF)

⚠ * When ALS inop, increase RVR to 55, vis to 1 mile.
** Circling not authorized in sector NE of Rwy 14-32.

ALSF-2
MISSED APPROACH: Climb to 5300, then turn right heading 290°, remain within HIF TACAN 5.7 DME until established on 290° heading. Intercept HIF R-250 outbound. Cross RAAMZ at 6500, then climb and maintain 7200 direct to FUJIN and hold.

ATIS 134.925 397.9	SALT LAKE CITY APP CON 121.1 319.25	TOWER 127.15 263.15	GND CON 121.6 275.8	CLNC DEL 124.1 335.8
-----------------------	--	------------------------	------------------------	-------------------------



8600 311° 131° VGSI and descent angles not coincident. 3.25° ≥ TCH 59		KOVAL HIF 22 ROUTES 7 6300 WUPAS HIF 4 JESGO 2.1 TACAN		5300 6500 hdg 290° HIF R-250 RAAMZ HIF 12 6500		ELEV 4789 TDZE 4786
3 NM 1.9 NM .6		311° 131° 131° 131°		5045 5045 5045 5045		131° 4887 4876 TWR 13,500-200 BCN 32
CATEGORY	A	B	C	D	E	Approach lights Rwy 14 2400'
S-14*	5160/24	374 (400-½)	5160/40	374	(400-¾)	REIL all Rws HIRL all Rws
CIRCLING**	5280-1	491 (500-1)	5280-1½ 491 (500-1½)	5340-2 551 (600-2)	5900-3 1111 (1200-3)	