

ILS or LOC X RWY 14

LOC I-HIF <u>109.9</u>	APCH CRS 139°	Rwy Idg 13,500 TDZE 4786 Arpt Elev 4789
----------------------------------	-------------------------	--

AL-296 [USAF]

HILL AFB (KHIF)

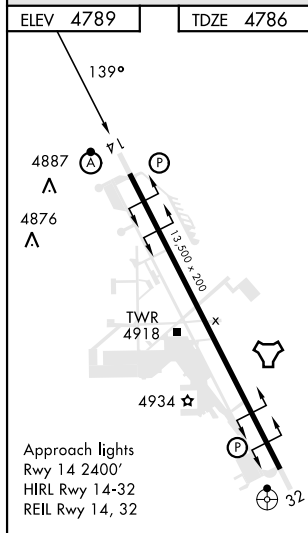
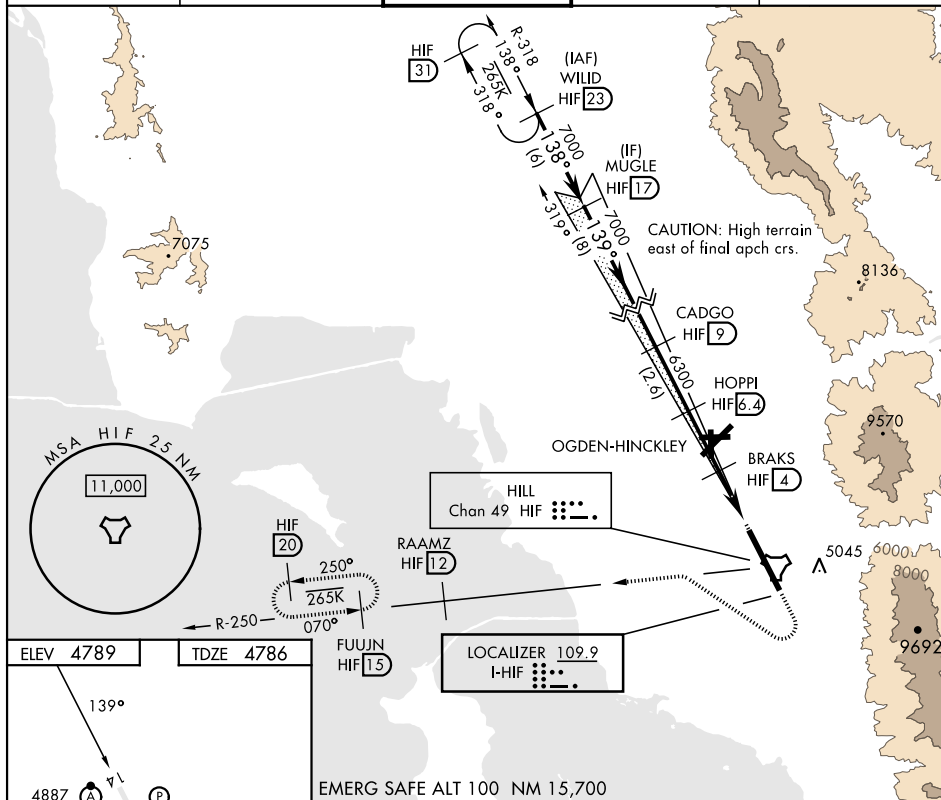
RADAR or DME required for LOC.

ALSF-2

MISSED APPROACH: Climb to 5300, then turn right heading 290°, remain within HIF TACAN 5.7 DME until established on 290° heading. Intercept the HIF R-250 outbound. Cross RAAMZ at 6500, then climb and maintain 7200 direct to FUUJN and hold.

T * When ALS inop, increase RVR to 40 and vis to $\frac{3}{4}$ mile.
 ** When ALS inop, increase RVR to 55 and vis to 1 mile.
 *** Circling not authorized in sector NE of Rwy 14-32.

ATIS	SALT LAKE CITY APP CON	TOWER	GND CON	CLNC DEL
134.925 397.9	121.1 319.25	127.15 263.15	121.6 275.8	124.1 335.8



EMERG SAFE ALT 100 NM 15,700

CATEGORY	A	B	C	D	E
S-ILS 14 *		4986/24	200	(200-½)	
S-LOC 14 **		5080/24	294	(300-½)	
*** C CIRCLING	5280-1	491 (500-1)	5280-1½ 491(500-1½)	5340-2 551 (600-2)	5900-3 1111 (1200-3)

OGDEN, UTAH

41°07'N-111°58'W

HILL AFB (KHIF)

Amdt 9 05OCT23

ILS or LOC X RWY 14

SW-4, 07 AUG 2025 to 04 SEP 2025

SW-4, 07 AUG 2025 to 04 SEP 2025