



OGDEN, UTAH

23278

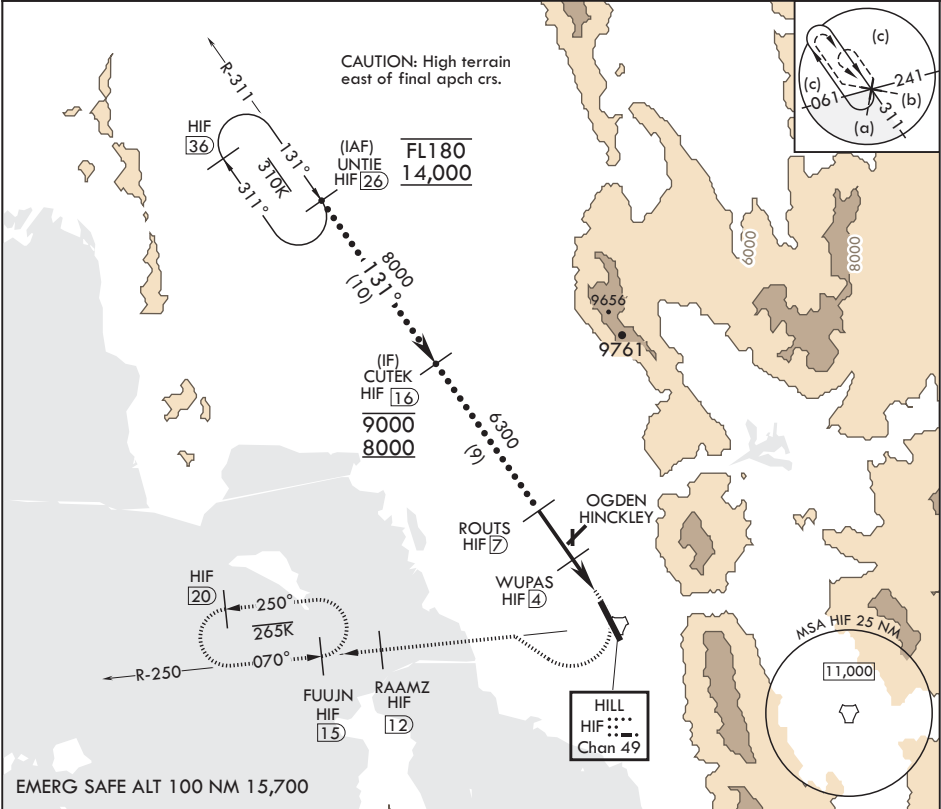
TACAN HIF Chan 49	APCH CRS 131°	Rwy ldg TDZE Arpt Elev	13,500 4786 4789
----------------------	------------------	------------------------------	------------------------

AL-296 (USAF)

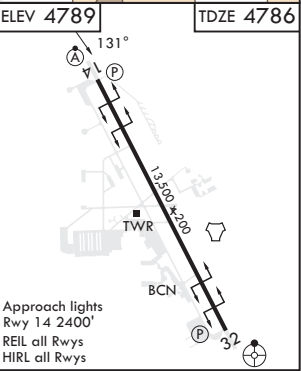
HILL AFB (KHIF)

<b>▼</b> * When ALS inop, increase CAT CDE RVR to 55, vis to 1 mile. ** Circling not authorized in sector NE of Rwy 14-32.	ALSF-2 	MISSED APPROACH: Climb to 5300, then turn right heading 290°, remain within HIF TACAN 5.7 DME until established on 290° heading. Intercept the HIF R-250 outbound. Cross RAAMZ at 6500, then climb and maintain 7200 direct to FUJUN and hold.
---	------------	--

ATIS 134.925 397.9	SALT LAKE CITY APP CON 121.1 319.25	TOWER 127.15 263.15	GND CON 121.6 275.8	CLNC DEL 124.1 335.8
-----------------------	--	------------------------	------------------------	-------------------------



UNTIE 26	VGSI and descent angle not coincident (VGSI Angle 2.80/TCH 59).	5300	6500	RAAMZ HIF 12 6500	ELEV 4789	TDZE 4786
FL180 14,000	CUTEK 16	ROUTS 7	WUPAS 4	JESGO 2.1	TACAN	
3.25° ≥ TCH 59	131°	6300	5700			
3 NM 1.9 NM .6						
CATEGORY	C	D	E			
S-14*	5160/40	374	(400-3/4)			
◼ CIRCLING**	5340-2 551	(600-2)	5900-3 1111 (1200-3)			



OGDEN, UTAH

41°07'N - 111°58'W

HILL AFB (KHIF)

Amtdt 9 05OCT23

