

HI-TACAN RWY 32

TACAN HIF Chan 49	APCH CRS 332°	Rwy ldg TDZE Arpt Elev 13,500 4783 4789
----------------------	------------------	--

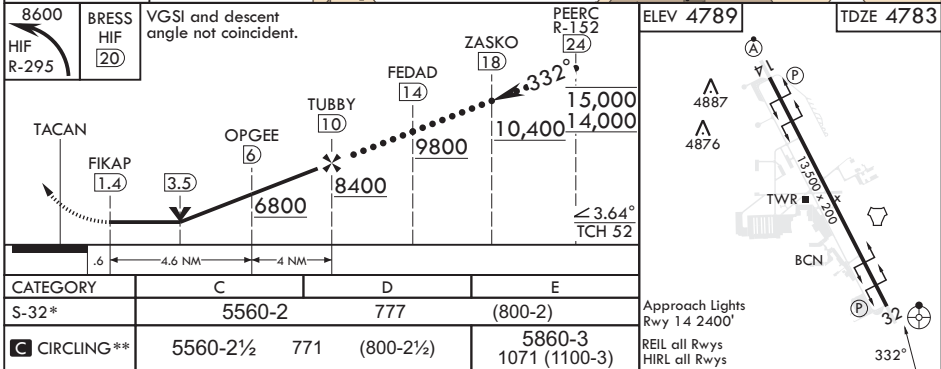
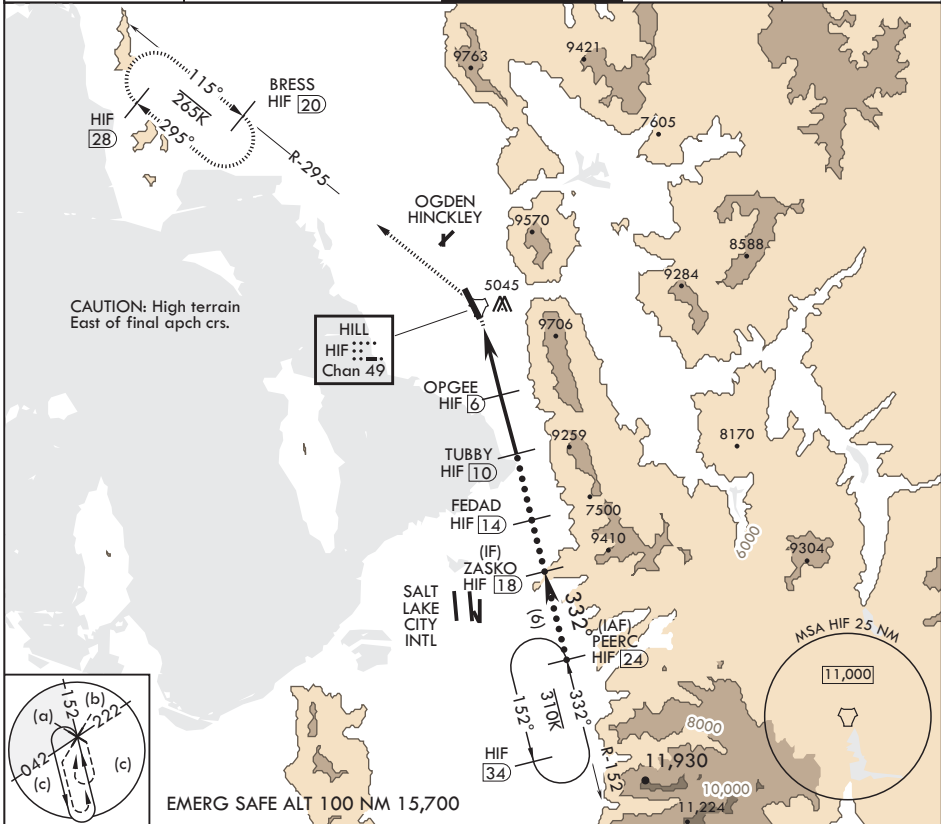
AL-296 (USAF)

HILL AFB (KHIF)

⚠ * When ALS inop, increase CAT CDE vis to 2 1/2 miles.
** Circling not authorized in sector NE of Rwy 14-32.

ODALS MISSED APPROACH: Climbing left turn to 8600 out HIF TACAN R-295 to BRESS and hold.

ATIS 134.925 397.9	SALT LAKE CITY APP CON 121.1 319.25	TOWER 127.15 263.15	GND CON 121.6 275.8	CLNC DEL 124.1 335.8
-----------------------	--	------------------------	------------------------	-------------------------



HI-TACAN RWY 32

SW-4, 07 AUG 2025 to 04 SEP 2025

SW-4, 07 AUG 2025 to 04 SEP 2025