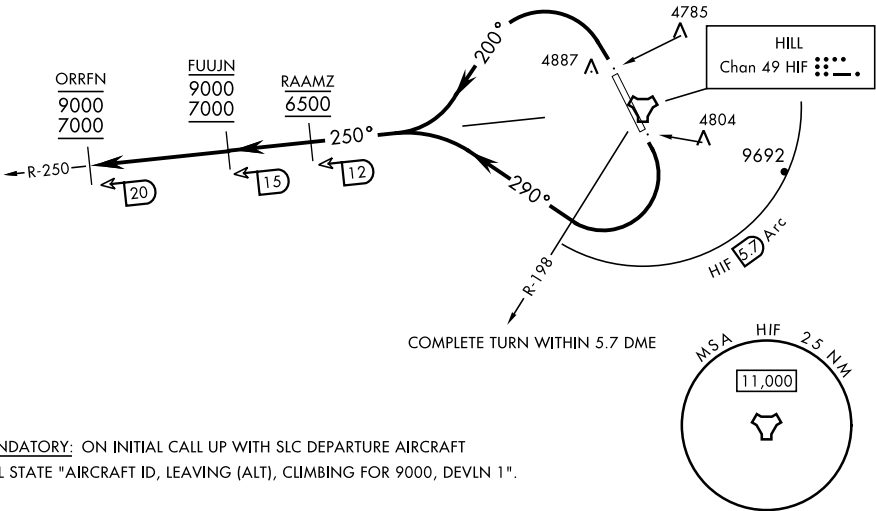


ATIS 134.925 397.9
CLNC DEL
124.1 335.8
GND CON
121.6 275.8
HILL TOWER
127.15 263.15
SALT LAKE CITY
DEP CON
121.1 319.25
CLOVER CON
134.1 285.65

| Rwy | Knots | 60 | 120 | 180 | 240 | 300 | 360 |
|-----|----------|------|------|-------|-------|-------|-------|
| 14 | V/V(fpm) | 2095 | 4190 | 6285 | 8380 | 10475 | 12570 |
| 32 | V/V(fpm) | 4610 | 9220 | 13830 | 18440 | 23050 | 27660 |

ATC Climb Rate to 5200

Airspeed in excess of 350 KIAS not authorized until established:
Rwy 14 heading 290°
Rwy 32 heading 200°



EMERG SAFE ALT 100 NM 15,700

DEPARTURE ROUTE DESCRIPTION

TAKEOFF RWY 14: Turn right heading 290°, remain within HIF TACAN 5.7 DME until passing the HIF R-198 and established on a heading greater than 256°, intercept HIF R-250 outbound prior to HIF 12 DME, cross RAAMZ at 6500, climb and maintain 7000 block 9000 as depicted.

TAKEOFF RWY 32: Turn left heading 200°, intercept HIF TACAN R-250 outbound prior to HIF 12 DME, cross RAAMZ at 6500, climb and maintain 7000 block 9000 as depicted.