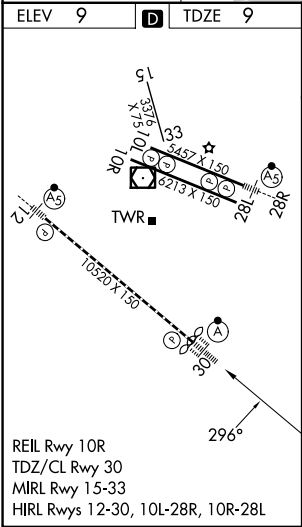
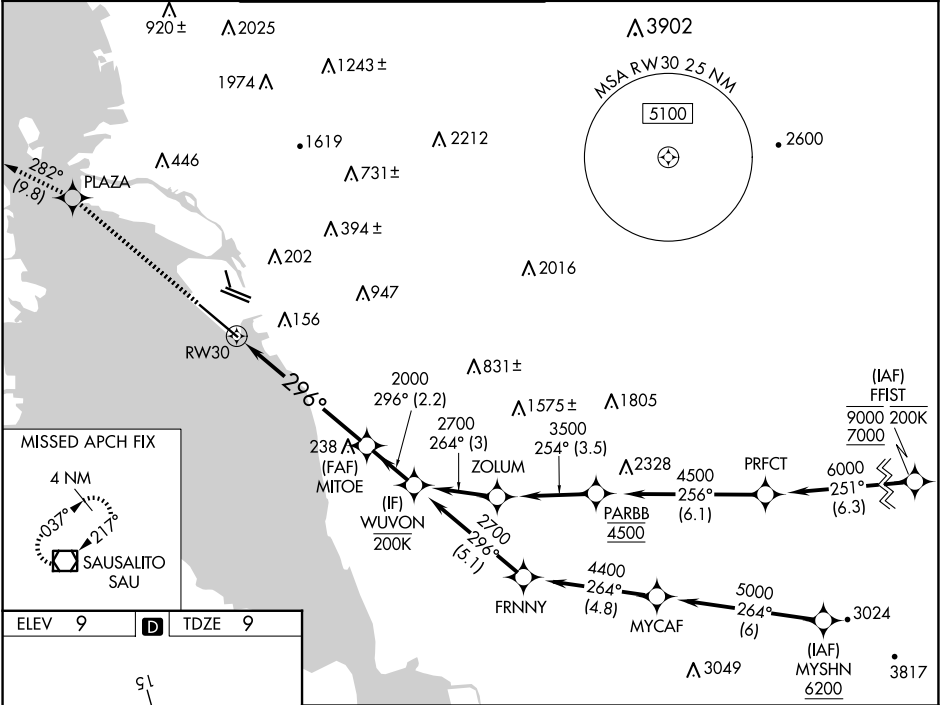


WAAS CH <b>93535</b> <b>W30A</b>	APP CRS <b>296°</b>	Rwy Ldg <b>10000</b> TDZE <b>9</b> Apt Elev <b>9</b>
--	------------------------	--

RNAV (GPS) Y RWY 30

OAKLAND INTL (OAK)

RNP APCH - GPS.			ALSIF-2		MISSED APPROACH: Climb to 4000 direct PLAZA and on track 282° to SAU VOR/DME and hold, continue climb-in-hold to 4000.	
<div><div></div><div></div></div> For uncompensated Baro-VNAV systems, LNAV/VNAV NA below 2°C or above 54°C. For inop ALS, increase LNAV/VNAV Cats A/B/C visibility to RVR 4000, Cat D visibility to RVR 4500, and LNAV Cats C/D visibility to 1 3⁄8 SM.			<div><div></div><div></div></div>			
D-ATIS 133.775	NORCAL APP CON 125.35 263.15	OAKLAND TOWER 118.3 291.65 (Rwys 10L/R-28L/R, 15-33) 127.2 256.9 (Rwy 12-30)		GND CON 121.9 (Rwys 10L/R-28L/R, 15-33) 121.75 (Rwy 12-30)		CLNC DEL 121.1
						CPDLC



4000	PLAZA	tr 282°	SAU	VGSI and RNAV glidepath not coincident (VGSI Angle 3.00/TCH 71).	
1.3 NM to RW30		1.3 NM		4.8 NM	
RW30		2.2 NM		GP 3.00° TCH 55	
CATEGORY		A		B	
LPV DA		209/18		200 (200-½)	
LNAV/VNAV DA		259/24		265/24	
LNAV MDA		500/24		500/50	
CIRCLING		560-1		660-1 3⁄4	