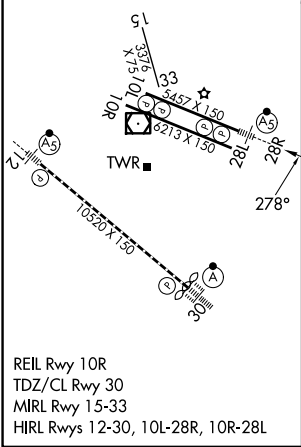
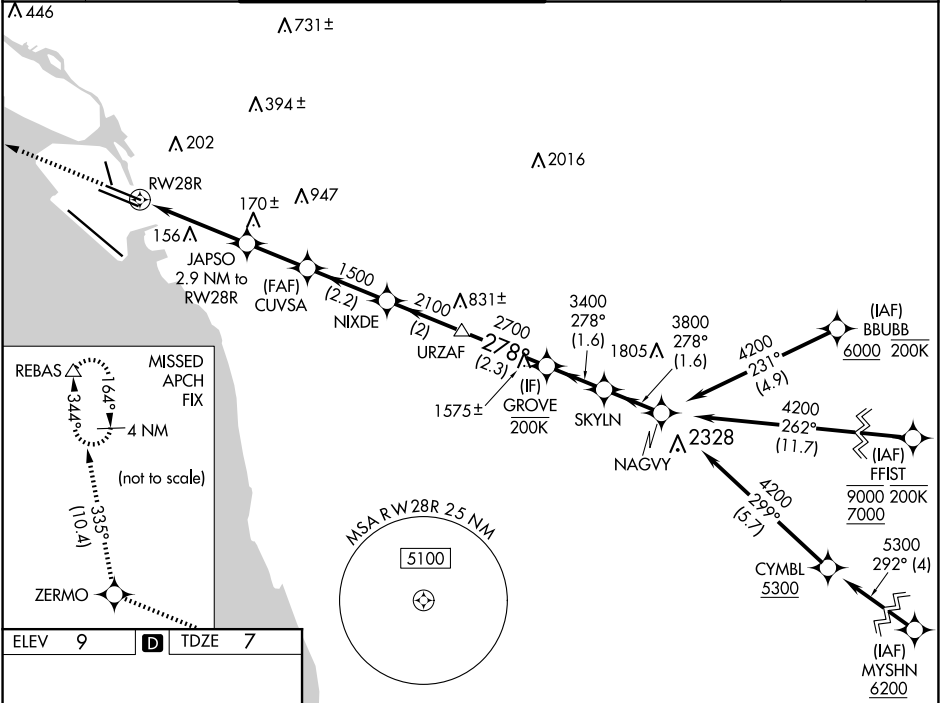


WAAS CH <b>42535</b> <b>W28B</b>	APP CRS <b>278°</b>	Rwy Ldg TDZE Apt Elev	<b>5457</b> <b>7</b> <b>9</b>
--	------------------------	-----------------------------	-------------------------------------

RNAV (GPS) Y RWY 28R

OAKLAND INTL (OAK)

RNP APCH - GPS.		MALSR		MISSED APPROACH: Climb to 3000 direct ZERMO and on track 335° to REBAS and hold.	
▼ For uncompensated Baro-VNAV systems, LNAV/VNAV NA below 2°C or above 54°C. For inop ALS, LNAV/VNAV all Cts increase visibility to RVR 5500. * RVR 1800 authorized with use of FD or AP or HUD to DA.					
D-ATIS <b>133.775</b>	NORCAL APP CON <b>125.35 263.15</b>	OAKLAND TOWER <b>118.3 291.65</b> (Rwys 10L/R-28L/R, 15-33) <b>127.2 256.9</b> (Rwy 12-30)		GND CON <b>121.9</b> (Rwys 10L/R-28L/R, 15-33) <b>121.75</b> (Rwy 12-30)	CLNC DEL <b>121.1</b>
				CPDLC	



3000 ↑	ZERMO ✱	tr 335°	REBAS △										
				JAPSO 2.9 NM to RW28R		CUVSA 1500	NIXDE	URZAF	GROVE	SKYLN	NAGVY		
				1.2 NM to RW28R		1500						278°	4200
				RW28R		980	1500	2100	2700	3400	3800	GP 3.00° TCH 53	
				1.2 NM	1.7 NM	1.6 NM	2.2 NM	2.3 NM	1.6 NM	1.6 NM			
CATEGORY		A		B		C		D					
LPV	DA*			207/24		200 (200-½)							
LNAV/ VNAV	DA			387/35		380 (400-¾)							
LNAV	MDA	440/24		433 (500-½)		440/40		433 (500-¾)					
CIRCLING		560-1		551 (600-1)		660-1¾ 651 (700-1¾)		1400-3 1391 (1400-3)					

SW-2, 07 AUG 2025 to 04 SEP 2025

SW-2, 07 AUG 2025 to 04 SEP 2025