

OAKLAND, CALIFORNIA

AL-294 (FAA)

25163

WAAS CH 72700 W28A	APP CRS 278°	Rwy Ldg 6213 TDZE 9 Apt Elev 9
--	------------------------	---

RNAV (GPS) Y RWY 28L

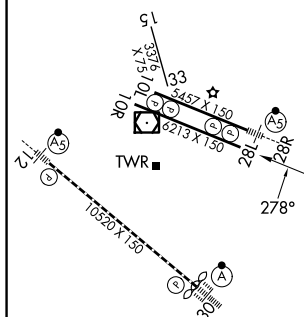
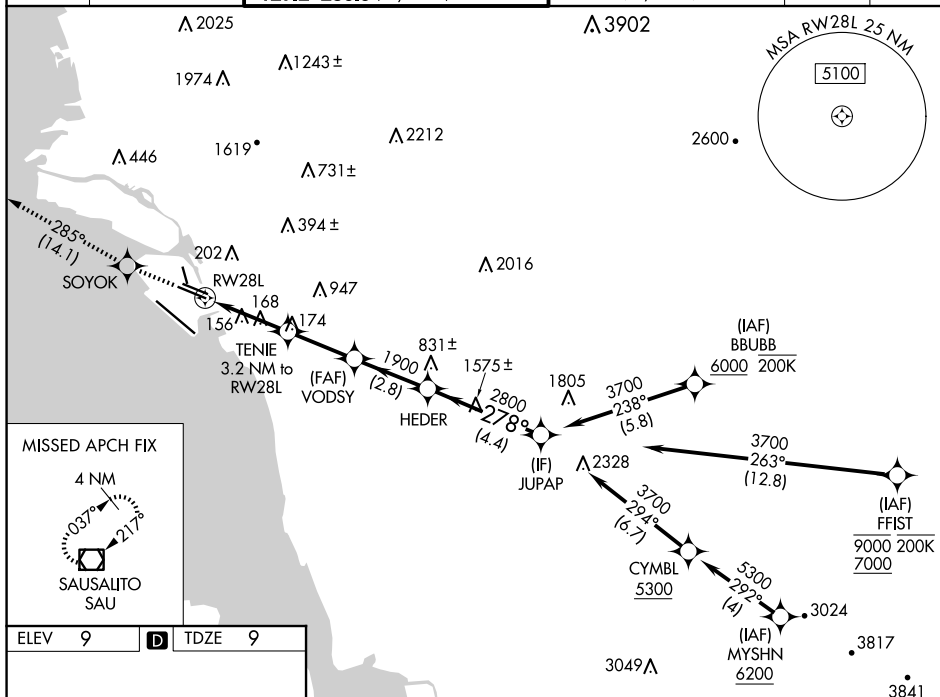
OAKLAND INTL (OAK)

RNP APCH - GPS.

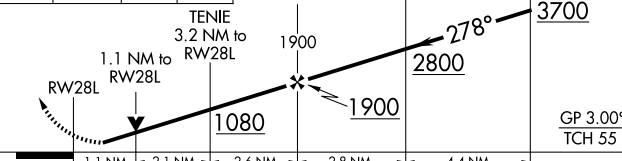
T Rwy 28L helicopter visibility reduction below RVR 4000 NA.
A For uncompensated Baro-VNAV systems, LNAV/VNAV NA below 2°C or above 54°C.

MISSED APPROACH: Climb to 4000 direct SOYOK and on track 285° to SAU VOR/DME and hold, continue climb-in-hold to 4000.

D-ATIS 133.775	NORCAL APP CON 125.35 263.15	OAKLAND TOWER 118.3 291.65 (Rwys 10L/R-28L/R, 15-33) 127.2 256.9 (Rwy 12-30)	GND CON 121.9 (Rwys 10L/R-28L/R, 15-33) 121.75 (Rwy 12-30)	CLNC DEL 121.1	CPDLC
--------------------------	--	--	--	--------------------------	-------



REIL Rwy 10R
TDZ/CL Rwy 30
MIRL Rwy 15-33
HIRL Rwy 12-30, 10L-28R, 10R-28L

4000 ↑	SOYOK ✱	tr 285° ☐	VGSI and RNAV glidepath not coincident (VGSI Angle 3.00/TCH 50).			
						
CATEGORY	A		B	C	D	
LPV DA	259/40		250 (300-¾)			
LNAV/VNAV DA	387/55		378 (400-1)			
LNAV MDA	420/55 411 (500-1)		420/60 411 (500-1¼)			
CIRCLING	560-1 551 (600-1)		660-1¾ 651 (700-1¾)		1400-3 1391 (1400-3)	

OAKLAND, CALIFORNIA

Amdt 5 12JUN25

OAKLAND INTL (OAK)

37°43'N-122°13'W

RNAV (GPS) Y RWY 28L

SW-2, 07 AUG 2025 to 04 SEP 2025