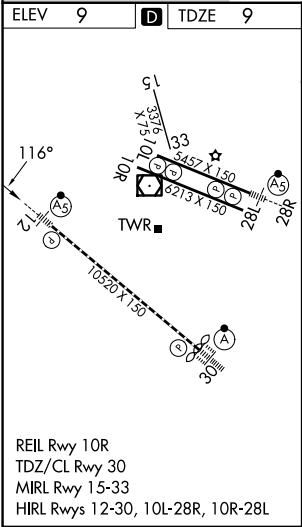
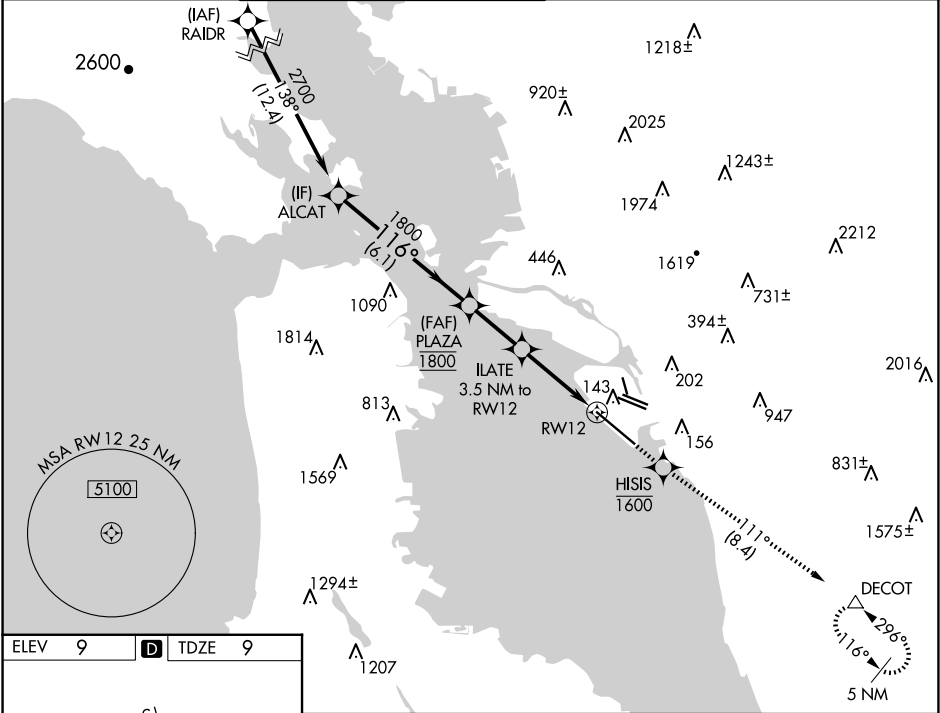


WAAS CH <b>86418</b> <b>W12A</b>	APP CRS <b>116°</b>	Rwy Ldg <b>10000</b> TDZE <b>9</b> Apt Elev <b>9</b>
--	------------------------	--

RNAV (GPS) Y RWY 12  
OAKLAND INTL (OAK)

<div><div></div><div></div></div> <div>For uncompensated Baro-VNAV systems, LNAV/VNAV NA below 0°C (32°F) or above 54°C (130°F). DME/DME RNP-0.3 NA. #RVR 1800 authorized with use of FD or AP or HUD to DA.</div>	MALSR 	MISSED APPROACH: Climb direct HISIS to cross HISIS at or below 1600, then climb to 5400 on track 111° to DECOT and hold, continue climb-in-hold to 5400.			
D-ATIS 133.775	NORCAL APP CON 125.35 263.15	OAKLAND TOWER 118.3 291.65 (Rwys 10L/R-28L/R, 15-33) 127.2 256.9 (Rwy 12-30)	GND CON 121.9 (Rwys 10L/R-28L/R, 15-33) 121.75 (Rwy 12-30)	CLNC DEL 121.1	CPDLC



VGSI and RNAV glidepath not coincident (VGSI Angle 2.75/TCH 70).			
ALCAT			
GP 2.75° TCH 55			
CATEGORY	A	B	C
LPV DA#	209/24 200 (200-½)		
LNAV/ VNAV DA	304/27 295 (300-⅝)		
LNAV MDA	360/24 351 (400-½)	360/30 351 (400-⅝)	
CIRCLING	560-1 551 (600-1)	660-1¾ 651 (700-1¾)	1380-3 1371 (1400-3)