

APP CRS

278°

Rwy Ldg

5457

TDZE

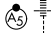
7

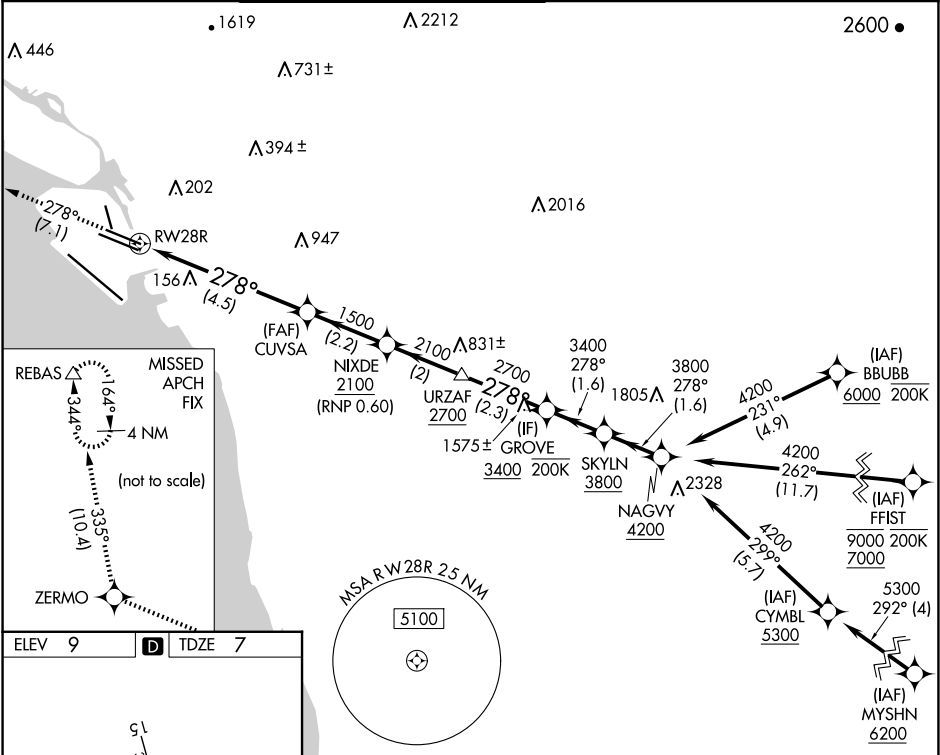
Apt Elev

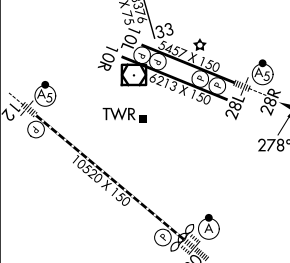

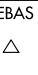
9

RNAV (RNP) Z RWY 28R

OAKLAND INTL (OAK)

RNP AR APCH - GPS. Authorization required.			<div>MALSR</div> <div></div>	MISSED APPROACH: Climb to 3000 on 278° track to ZERMO and on 335° track to REBAS and hold.		
<div><div><div></div></div><div>For uncompensated Baro-VNAV systems, procedure NA below 2°C or above 54°C. For inop ALS, increase RNP 0.30 all Cats visibility to RVR 6000.</div></div>						
<div>D-ATIS</div> <div>133.775</div>	<div>NORCAL APP CON</div> <div>125.35 263.15</div>	<div>OAKLAND TOWER</div> <div>118.3 291.65 (Rwys 10L/R-28L/R, 15-33)</div> <div>127.2 256.9 (Rwy 12-30)</div>		<div>GND CON</div> <div>121.9 (Rwys 10L/R-28L/R, 15-33)</div> <div>121.75 (Rwy 12-30)</div>	<div>CLNC DEL</div> <div>121.1</div>	<div>CPDLC</div>



		3000 ↑ tr 278°		ZERMO 		REBAS tr 335° 		URZAF		GROVE		SKYLN		NAGVY 278°	
				CUVSA 1500		NIXDE 2100		2700		3400		3800		4200	
		RW28R		1500										GP 3.00° TCH 53	
		4.5 NM		2.2 NM		2 NM		2.3 NM		1.6 NM		1.6 NM			
CATEGORY				A		B		C		D					
RNP 0.10 DA						332/26		325 (400-½)							
RNP 0.30 DA						418/40		411 (500-¾)							
AUTHORIZATION REQUIRED															

REIL Rwy 10R  
TDZ/CL Rwy 30  
MIRL Rwy 15-33  
HIRL Rwys 12-30, 10L-28R, 10R-28L