

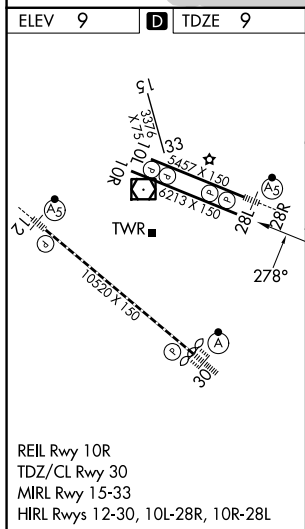
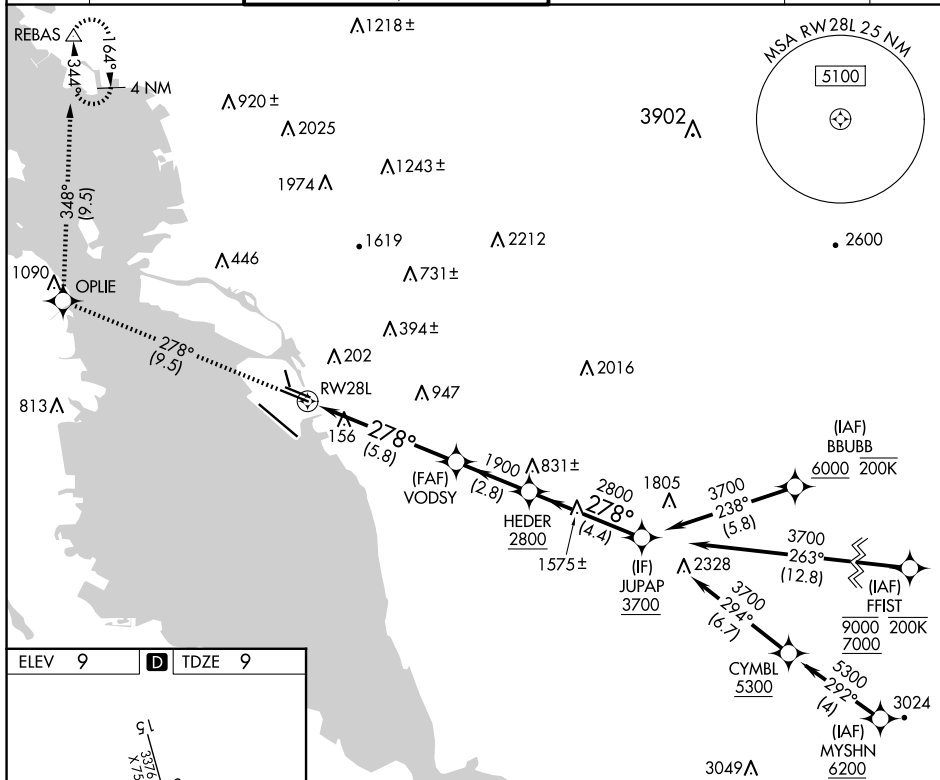
25163

RNAV (RNP) Z RWY 28L
OAKLAND INTL (OAK)

MISSED APPROACH: Climb to 3000 on track 278° to OPLIE and on track 348° to REBAS and hold.

MISSED APPROACH: Climb to 3000 on track 278° to OPLIE and on track 348° to REBAS and hold.

| | | | | | |
|--------------------------|--|--|--|--------------------------|-------|
| D-ATIS 133.775 | NORCAL APP CON 125.35 263.15 | OAKLAND TOWER 118.3 291.65 (Rwys 10L/R-28L/R, 15-33) 127.2 256.9 (Rwy 12-30) | GND CON 121.9 (Rwys 10L/R-28L/R, 15-33) 121.75 (Rwy 12-30) | CLNC DEL 121.1 | CPDLC |
|--------------------------|--|--|--|--------------------------|-------|



| | | | | | | |
|-------------------------------|---------------------|---------|------------|--|---|-------|
| 3000 ↑ tr 278° | OPUE ✦ | tr 348° | REBAS △ | VGSi and RNAV glidepath not coincident (VGSi Angle 3.00°/TCH 50). | | JUPAP |
| | | | | VODSY HEDER 278° 1900 2800 3700 GP 3.00° TCH 55 | | |
| CATEGORY | A | | B | | C | D |
| RNP 0.10 DA | 306/45 297 (300-%) | | | | | |
| RNP 0.15 DA | 359/55 350 (400-1) | | | | | |
| RNP 0.30 DA | 425/60 416 (500-1¼) | | | | | |
| AUTHORIZATION REQUIRED | | | | | | |

OAKLAND INTL (OAK)
RNAV (RNP) Z RWY 28L