

KATFH THREE DEPARTURE(RNAV)

OAKLAND INTL (OAK)
OAKLAND, CALIFORNIA

**TOP ALTITUDE:
ASSIGNED BY ATC**

T

DEPARTURE ROUTE DESCRIPTION

TAKEOFF RUNWAYS 10L, 10R: Climb on heading 098° to 520, then right turn direct to cross ROWLY at or below 3000, then on track 150° to cross VYDA at or below 4000, then on track 150° to cross KATFH at or above 6000. Thence. . .

TAKEOFF RUNWAY 12: Climb on heading 116° to 520, then direct to cross ROWLY at or below 3000, then on track 150° to cross VYYDA at or below 4000, then on track 150° to cross KATFH at or above 6000. Thence. . .

...on (transition). Maintain ATC assigned altitude, expect filed altitude 10 minutes after departure.

KAYEX TRANSITION (KATFH3.KAYEX)

KTINA TRANSITION (KATFH3.KTINA)

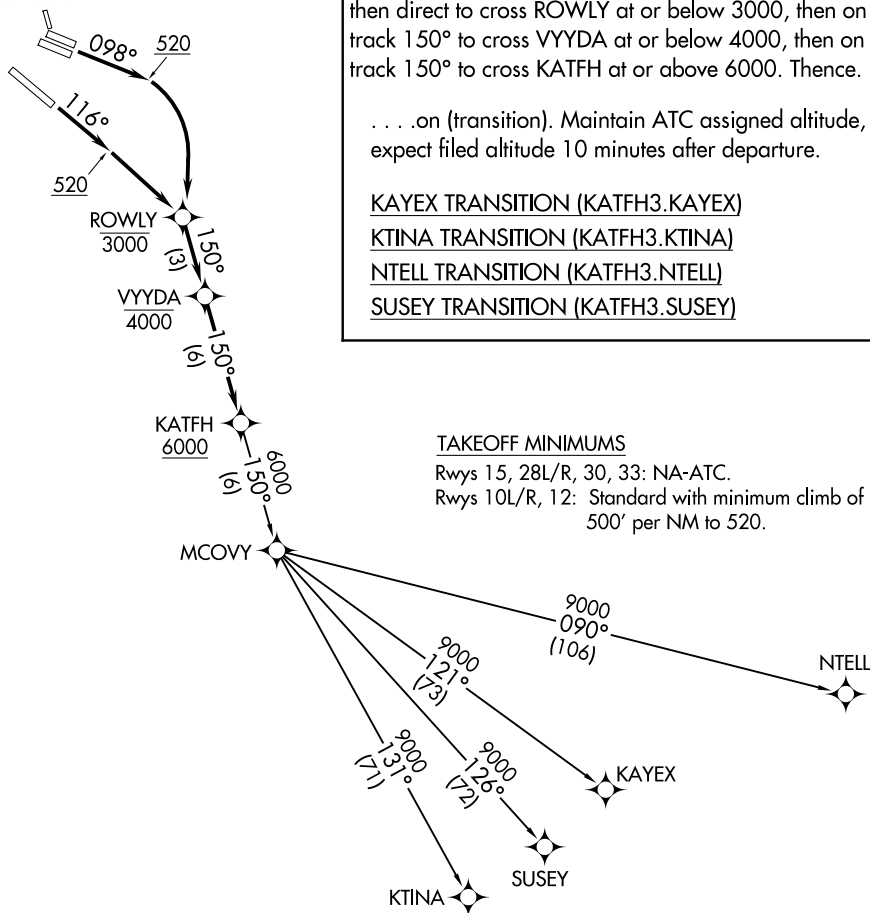
NTELL TRANSITION (KATFH3.NTELL)

SUSEY TRANSITION (KATFH3.SUSEY)

TAKEOFF MINIMUMS

Rwys 15, 28L/R, 30, 33: NA-ATC.

Rwys 10L/R, 12: Standard with minimum climb of 500' per NM to 520.



NOTE: RNAV 1.

NOTE: DME/DME/IRU or GPS required.

NOTE: RADAR required for non-GPS equipped aircraft.



LOSHN



NOTE: Chart not to scale.

KATFH THREE DEPARTURE (RNAV)

(KATFH3.KATFH) 12AUG21

OAKLAND, CALIFORNIA
OAKLAND INTL (OAK)

SW-2, 07 AUG 2025 to 04 SEP 2025

SW-2, 07 AUG 2025 to 04 SEP 2025