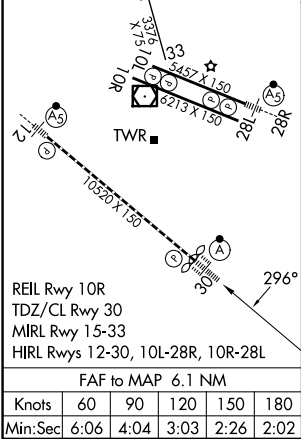
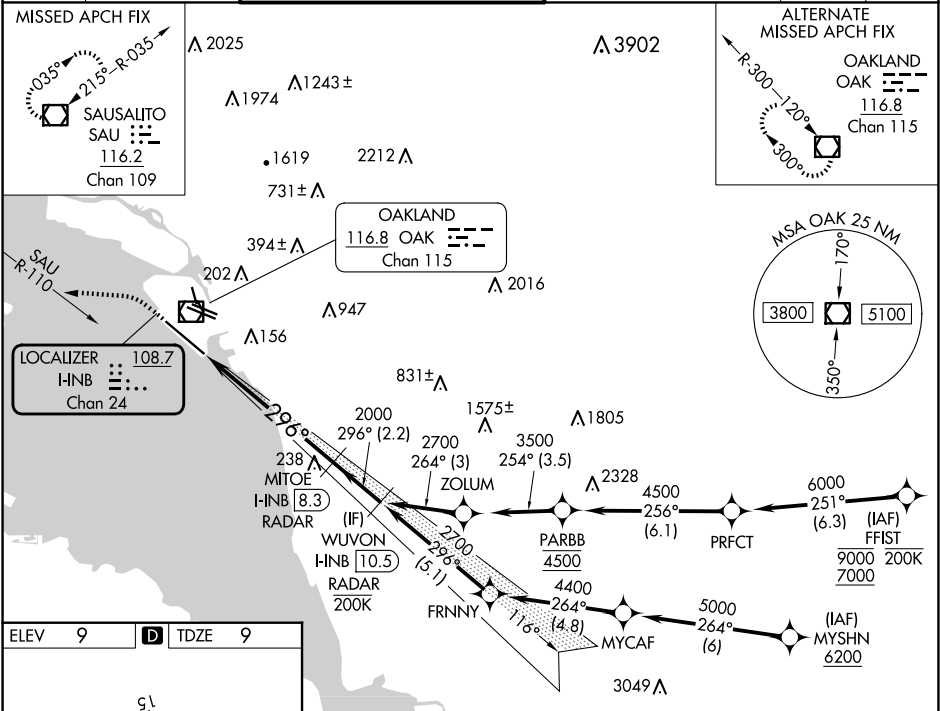


LOC/DME I-INB 108.7 Chan 24	APP CRS 296°	Rwy Ldg TDZE Apt Elev 10000 9 9
---	------------------------	---

ILS or LOC RWY 30
OAKLAND INTL (OAK)

RNP APCH - GPS. From FFI1 or MYSHN. DME or RADAR required.		ALSIF-2 	MISSED APPROACH: Climb to 600 then climbing left turn to 4000 on heading 260° and on SAU VOR/DME R-110 to SAU VOR/DME and hold, continue climb-in-hold to 4000.	
▼ For inop ALS, increase S-LOC-30 Cat C and D visibility to 1½ SM. ▲		▲		
D-ATIS 133.775	NORCAL APP CON 125.35 263.15	OAKLAND TOWER 118.3 291.65 (Rwys 10L/R-28L/R, 15-33) 127.2 256.9 (Rwy 12-30)	GND CON 121.9 (Rwys 10L/R-28L/R, 15-33) 121.75 (Rwy 12-30)	CINC DEL 121.1
				CPDLC



ELEV 9 TDZE 9		600 4000 SAU R-110 SAU		VGS and ILS glidepath not coincident (VGS Angle 3.00/TCH 71°).	
WUVON I-INB (10.5) RADAR		MITOE I-INB (8.3) RADAR		WUVON I-INB (10.5) RADAR	
HNB (2.2)		HNB (3.5)		HNB (2.2)	
1.3 NM		4.8 NM		2.2 NM	
CATEGORY	A	B	C	D	
S-ILS 30	209/18 200 (200-½)				
S-LOC 30	500/24	491 (500-½)	500/50	491 (500-1)	
CIRCLING	560-1	551 (600-1)	660-1¾ 651 (700-1¾)	1400-3 1391 (1400-3)	

SW-2, 07 AUG 2025 to 04 SEP 2025

SW-2, 07 AUG 2025 to 04 SEP 2025