
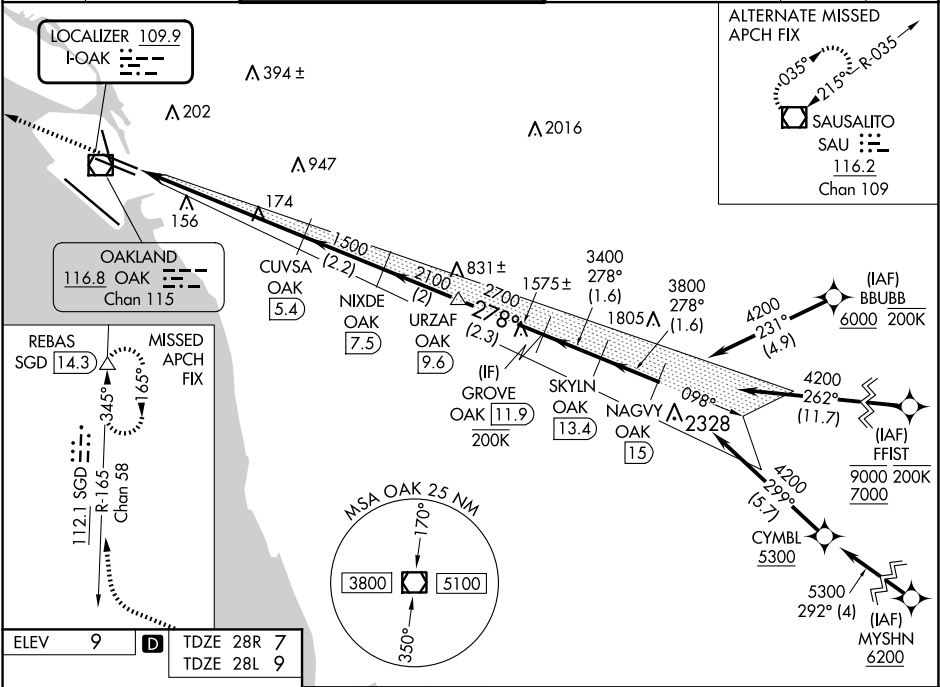


LOC I-OAK	APP CRS	Rwy Ldg	28R	28L
109.9	278°	TDZE	5457	6213
		Apt Elev	7	9
			9	9

ILS or LOC RWY 28R
OAKLAND INTL (OAK)

RNP APCH - GPS. From BBUBB or FFIST or MYSHN.			<div>MALSR Rwy 28R</div> <div></div>	MISSED APPROACH: Climb to 1900 then dimbing right turn to 3000 on heading 340° and SGD VORTAC R-165 to REBAS/SGD 14.3 DME and hold.				
DME required.								
DME from OAK VOR/DME. Simultaneous reception of I-OAK and OAK DME required. *RVR 1800 authorized with use of FD or AP or HUD to DA.								
D-ATIS	NORCAL APP CON	OAKLAND TOWER		GND CON		CLNC DEL	CPDLC	
133.775	125.35 263.15	118.3 291.65 (Rwys 10L/R-28L/R, 15-33) 127.2 256.9 (Rwy 12-30)		121.9 (Rwys 10L/R-28L/R, 15-33) 121.75 (Rwy 12-30)		121.1		



ELEV 9	D	TDZE 28R 7	TDZE 28L 9
REIL Rwy 10R TDZ/CL Rwy 30 MIRL Rwy 15-33 HIRL Rwys 12-30, 10L-28R, 10R-28L FAF to MAP 4.5 NM			
Knots	60	90	120 150 180
Min:Sec	4:30	3:00	2:15 1:48 1:30
CATEGORY	A	B	C
S-ILS 28R*	207/24 200 (200-1/2)		
S-LOC 28R	440/24	433 (500-1/2)	440/40 433 (500-3/4)
SIDESTEP 28L	440-1	431 (500-1)	440-1 1/2 431 (500-2)
CIRCLING	560-1	551 (600-1)	660-1 3/4 651 (700-1 3/4) 1391 (1400-3)