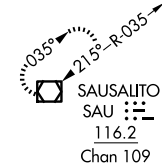


ILS RWY 30 (CAT II & III)  
OAKLAND INTL (OAK)

**MISSED APPROACH:** Climb to 600 then climbing left turn to 4000 on heading 260° and on SAU VOR/DME R-110 to SAU VOR/DME and hold, continue climb-in-hold to 4000.

**T** Missed approach requires minimum climb of 213 feet per NM to 1540, if unable to meet climb gradient, see ILS or LOC RWY 30. CAT II: RVR 1000 authorized with specific OPSPEC, MSPEC, or LOA approval and use of autoland or HUD to touchdown.

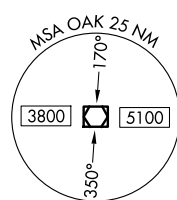
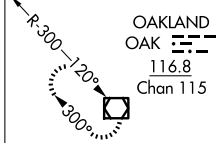
MISSED APCH FIX



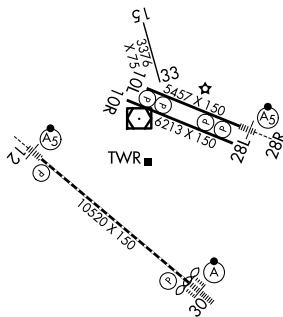
Λ 2025

Λ 3902

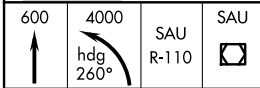
ALTERNATE  
MISSED APCH FIX



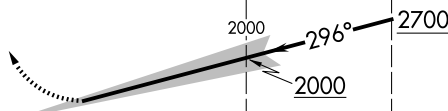
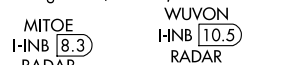
LOCALIZER 108.7  
I-INB  
Chan 24



REIL Rwy 10R  
TDZ/CL Rwy 30  
MIRL Rwy 15-33  
HIRL Rwy 12-30, 10L-28R, 10R-28L



VGSI and ILS glidepath not coincident  
(VGSI Angle 3.00/TCH 71).



	1051	6.1 NM	2.2 NM	
CATEGORY	A	B	C	D
S-ILS 30	CAT II RA 100/12 100 DA 109			
S-ILS 30	CAT III RVR 06			

## CATEGORY II & III ILS - SPECIAL AIRCREW & AIRCRAFT CERTIFICATION REQUIRED