

LOC I-AAZ

111.9

APP CRS

116°

Rwy Ldg

10000

TDZE

9

Apt Elev

9

ILS RWY 12 (SA CAT I)

OAKLAND INTL (OAK)

DME required. From RAIDR: RNAV 1-GPS required.

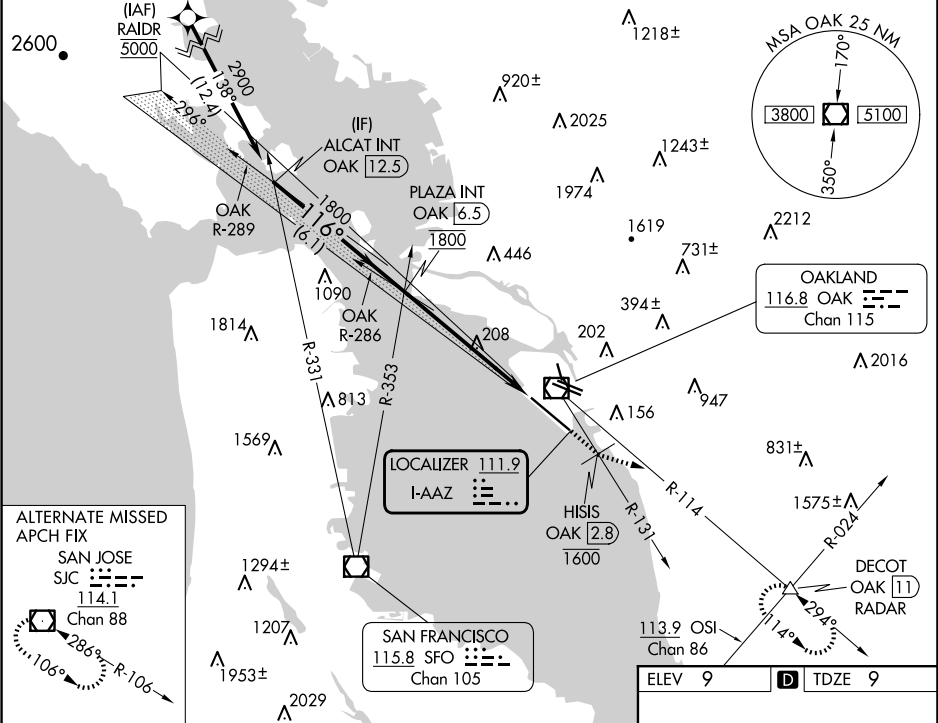
MALSR

AS

MISSED APPROACH: Climb on heading 116° and on OAK VOR/DME R-131 to cross HISIS/OAK 2.8 DME at or below 1600 then climb to 5100 on heading 090° and on OAK VOR/DME R-114 to DECOT INT/OAK 11 DME/RADAR and hold, continue climb-in-hold to 5100.

Requires specific OPSPEC, MSPEC, or LOA approval and use of HUD to DH.

D-ATIS	NORCAL APP CON	OAKLAND TOWER	GND CON	CLNC DEL	CPDLC
133.775	125.35 263.15	118.3 291.65 127.2 256.9	(Rwys 10L/R-28L/R, 15-33) (Rwy 12-30)	121.9 (Rwys 10L/R-28L/R, 15-33) 121.75 (Rwy 12-30)	



ALCAT INT OAK 12.5

↑ hdg 116°

OAK R-131

HISIS OAK 2.8

5100

OAK R-114

DECOT

PLAZA INT OAK 6.5

VGSi and ILS glidepath not coincident (VGSi Angle 2.75/TCH 70).

2900

116°

1800

GS 2.75° TCH 55

6.1 NM

6 NM

1145°

CATEGORY	A	B	C	D
S-ILS 12	RA 153/14 150 DA 159			

SA CATEGORY I ILS - SPECIAL AIRCREW & AIRCRAFT CERTIFICATION REQUIRED

REIL Rwy 10R

TDZ/CL Rwy 30

MIRL Rwy 15-33

HIRL Rwys 12-30, 10L-28R, 10R-28L