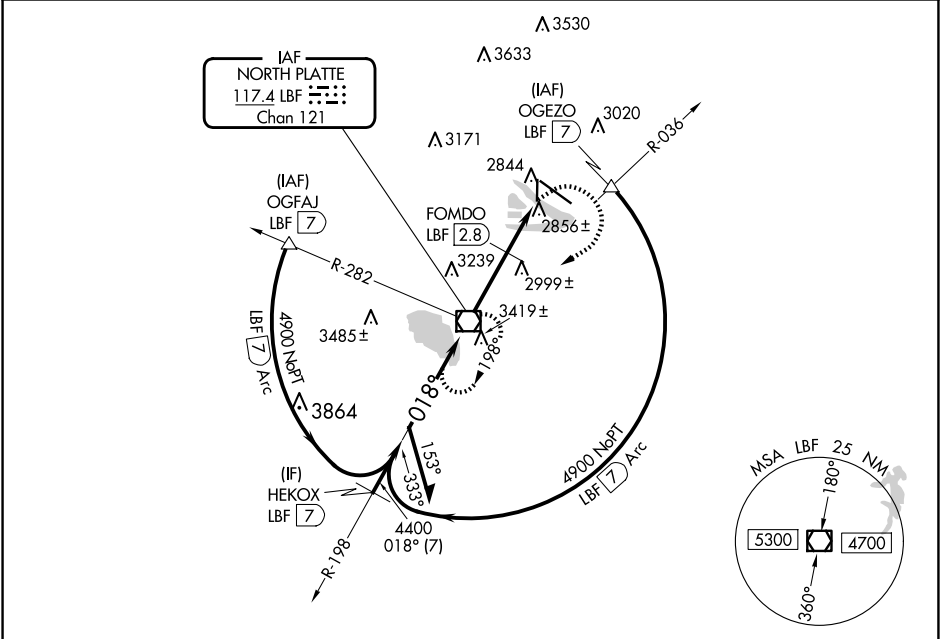


| | | | |
|-------------|---------|----------|------|
| VOR/DME LBF | APP CRS | Rwy Idg | 4135 |
| 117.4 | 018° | TDZE | 2777 |
| Chan 121 | | Apt Elev | 2777 |

VOR RWY 35

NORTH PLATTE RGNL/LEE BIRD FLD (LBF')

| | | | |
|---|---------------|---|----------------|
| Rwy 35 helicopter visibility reduction below 3/4 SM NA. | | MISSED APPROACH: Climbing right turn to 4900 direct LBF VOR/DME and hold, continue climb-in-hold to 4900. | |
| ASOS | DENVER CENTER | CLNC DEL | UNICOM |
| 118.425 | 132.7 226.675 | 132.7 | 123.0 (CTAF) 0 |



| | | | |
|---------------------|--|-----------------|--|
| ELEV 2777 | | TDZE 2777 | |
| Remain within 10 NM | | FOMDO LBF 2.8 | |
| 4900 | | 3540 | |
| 198° | | 018° | |
| 4400 | | 3540 | |
| 2.8 NM | | 0.9 | |
| 1.3 | | 3.12 | |
| TCH 37 | | LBF 3.7 | |
| LBF 5 | | LBF 3.7 | |
| CATEGORY | | A | |
| S-35 | | 3540-1 | |
| CIRCLING | | 3540-1 | |
| FOMDO FIX MINIMUMS | | 3220-1 | |
| S-35 | | 3220-1 | |
| CIRCLING | | 3280-1 | |
| HIREL Rwy 12-30 | | REIL Rwy 35 | |
| MIRL Rwy 17-35 | | FAF to MAP 5 NM | |
| Knots | | 60 | |
| Min:Sec | | 5:00 | |
| | | 3:20 | |
| | | 2:30 | |
| | | 2:00 | |
| | | 1:40 | |