

VORTAC ORF

116.9

Chan 116

APP CRS

326°

Rwy Ldg TDZE

3901 25

Apt Elev

26

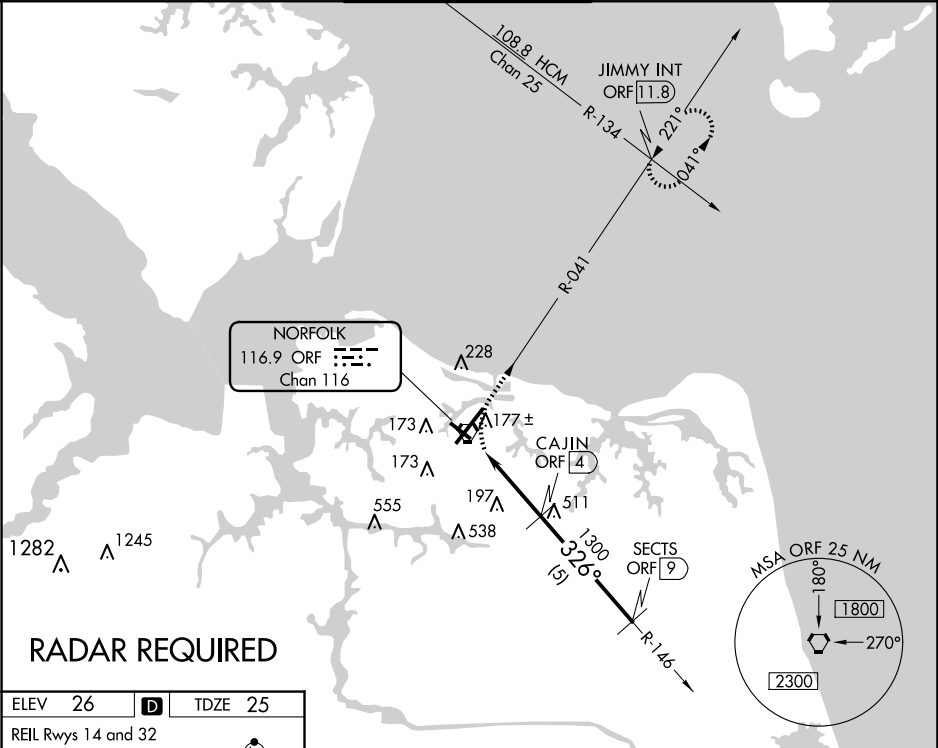
VOR/DME RWY 32

NORFOLK INTL (ORF)

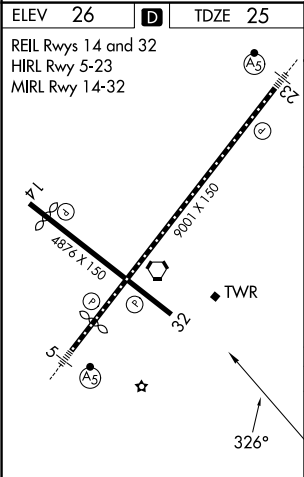
Visibility reduction by helicopters NA.

MISSED APPROACH: Climbing right turn to 2000 via ORF R-041 to JIMMY Int/11.8 DME and hold.

| | | | | |
|----------------|--------------------------------|------------------------------|------------------|-------------------|
| ATIS 127.15 | NORFOLK APP CON 118.9 353.7 | NORFOLK TOWER 120.8 257.8 | GND CON 121.9 | CLNC DEL 118.5 |
|----------------|--------------------------------|------------------------------|------------------|-------------------|



RADAR REQUIRED



2000

ORF R-041

JIMMY INT

SECTS ORF 9

CAJIN ORF 4

ORF 0.2

1300

1600

326°

3.07°

TCH 35

3.8 NM

5 NM

CATEGORY

A

B

C

D

S-32

460-1

435 (500-1)

460-1¼

435 (500-1¼)

460-1½

435 (500-1½)

CIRCLING

480-1

454 (500-1)

540-1

514 (600-1)

540-1½

514 (600-1½)

900-2¾

874 (900-2¾)

NE-3, 07 AUG 2025 to 04 SEP 2025

NE-3, 07 AUG 2025 to 04 SEP 2025