

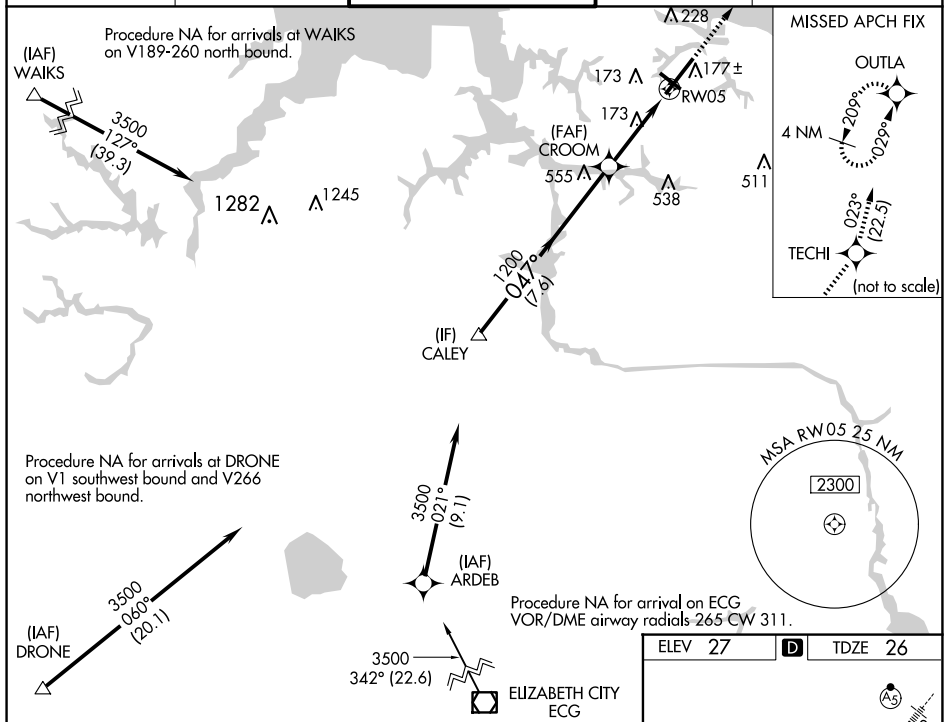
RNAV (GPS) Z RWY 5  
NORFOLK INTL (ORF)

**T** For uncompensated Baro-VNAV systems, LNAV/VNAV NA below -9°C or above 54°C.  
**A** For inop ALS, increase LNAV/VNAV all Cats visibility to RVR 4500 and LNAV Cats C and D visibility to RVR 6000. \*\*RVR 1800 authorized with use of FD or AP or HUD to DA.



**MISSED APPROACH:**  
Climb to 2000 direct  
TECH1 then on track 023°  
to OUTLA and hold.

ATIS 127.15	NORFOLK APP CON 118.9 353.7	NORFOLK TOWER 120.8 257.8	GND CON 121.9	CLNC DEL 118.5
----------------	--------------------------------	------------------------------	------------------	-------------------



VGSi and RNAV glidepath not coincident (VGSi Angle 3.00/TCH 71).

CALEY

3500

0.47°

CROOM 1200

1200

GP 3.00° TCH 56

7.6 NM

2.4 NM

1.1 NM

RW05

\*1.1 NM to RW05

2000

TECHI

tr 023°

OUTLA

\*LNAV only.

