

APP CRS <b>047°</b>	Rwy Ldg	<b>7809</b>
	TDZE	<b>26</b>
	Apt Elev	<b>27</b>

RNAV (RNP) Y RWY 5

NORFOLK INTL (ORF)

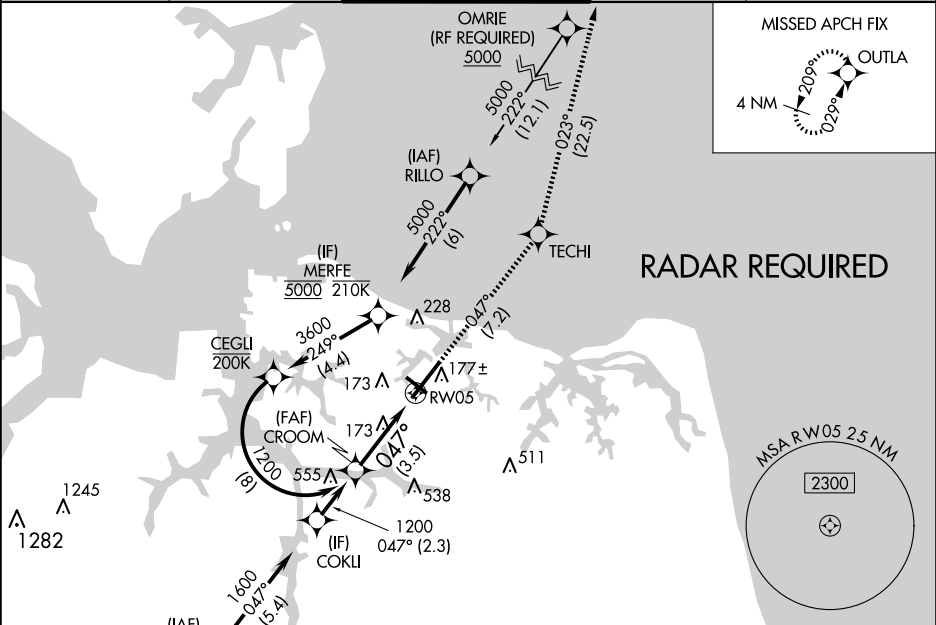
▼

For uncompensated Baro-VNAV systems, LNAV/VNAV NA below -9°C (16°F) or above 54°C (130°F). GPS required.

MALSR

MISSED APPROACH: Climb to 2000 on track 047° to TECHI and on track 023° to OUTLA and hold.

ATIS <b>127.15</b>	NORFOLK APP CON <b>118.9 353.7</b>	NORFOLK TOWER <b>120.8 257.8</b>	GND CON <b>121.9</b>	CLNC DEL <b>118.5</b>
-----------------------	---------------------------------------	-------------------------------------	-------------------------	--------------------------



See planview for multiple IF locations.

2000

↑

tr 047°

TECHI

tr 023°

OUTLA

CROOM

1200

1200

047°

RW05

GP 3.00°

TCH 56

3.5 NM

CATEGORY	A	B	C	D
RNP 0.10 DA		350/26	324 (400-½)	
RNP 0.30 DA		454/40	428 (500-¾)	

**AUTHORIZATION REQUIRED**

ELEV 27

D

TDZE 26

REIL Rwy 14 and 32  
HIRL Rwy 5-23  
MIRL Rwy 14-32