

RNAV (GPS) RWY 28

APCH CRS	Rwy Idg
280°	7375
TDZE	14
Arpt Elev	15

[USN]

NORFOLK NS (CHAMBERS FLD) (KNGU)

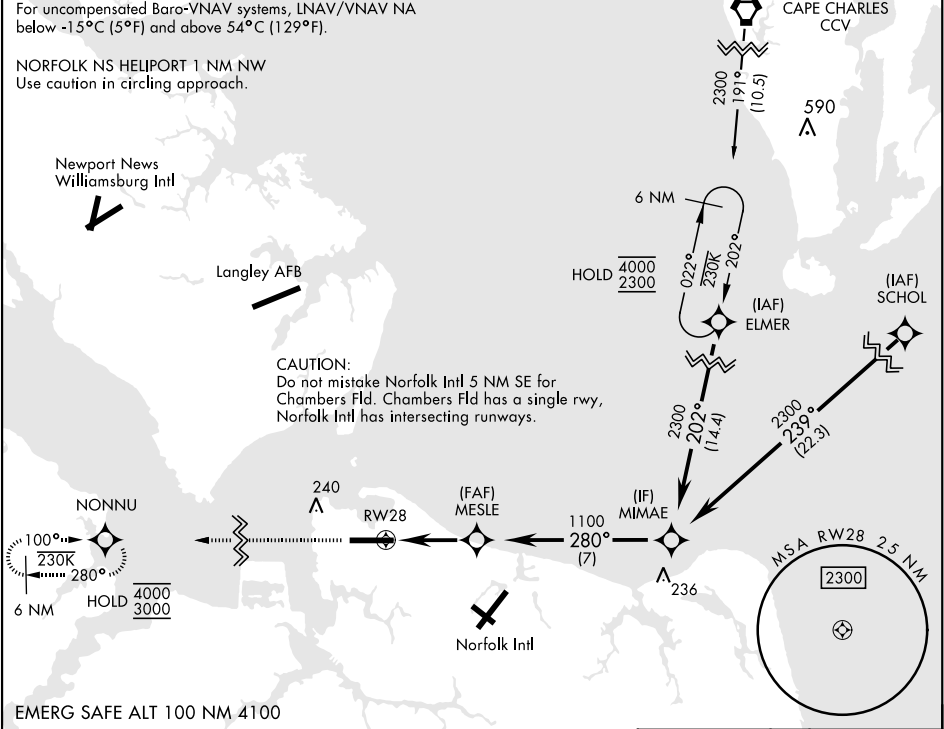
RNP APCH

When ALS inop, increase vis to 7/8 mile. Helicopter vis reduction below 3/4 NA.
When ALS inop, increase CAT AB vis to 1 mile; CAT CDE vis to 1 1/4 miles.
Circling not authorized S of Rwy 10-28.

SSALF

MISSED APPROACH: Climb to 3000 direct NONNU and hold, continue climb in hold to 3000.

ATIS	APP CON	CHAMBERS TOWER	GND CON	CLNC DEL	ASR/PAR
118.425 338.225	118.9 273.475	124.3 379.15	121.8 370.85	120.7 339.8	



3000

NONNU

VGSI and RNAV glidepath not coincident
(VGSI angle 3.00/TCH 36).

ELEV 15

TDZE 14

Rwy 10 Idg 8071'
Rwy 28 Idg 7375'

HIRL Rwy 10-28
REIL Rwy 10-28
TDZL/CL Rwy 10-28