


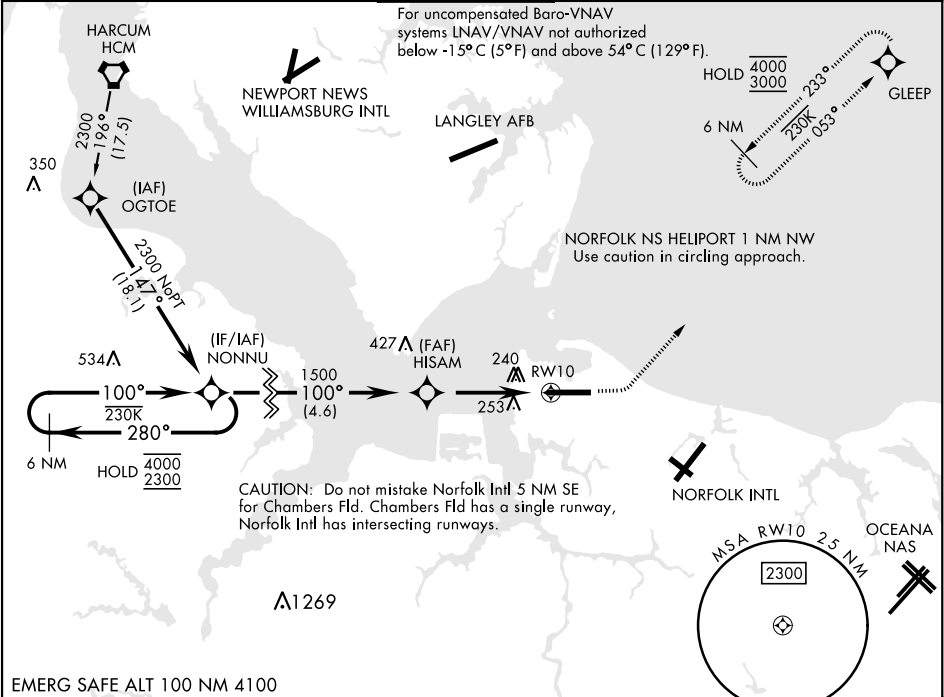
RNAV (GPS) RWY 10

WAAS	APCH CRS	Rwy Idg
Chan 44826	100°	8071
W10A		14
		15

[USN]

NORFOLK NS (CHAMBERS FLD) (KNGU)

RNP APCH			ALSF-2		MISSED APPROACH: Climb to 800 then climbing left turn to 3000 direct GLEEP and hold.	
*When ALS inop, increase vis to ¾ mile. **When ALS inop, increase vis to 1¾ miles. ***When ALS inop, increase CAT AB vis to 1 mile, CAT CDE vis to 1¾ miles. ****Circling not authorized S of Rwy 10-28.						
ATIS 118.425 338.225		APP CON 118.9 273.475	CHAMBERS TOWER 124.3 379.15	GND CON 121.8 370.85		CLNC DEL 120.7 339.8
						ASR/PAR



VGSI and RNAV glidepath not coincident (VGSI Angle 3.00/TCH 35).						800	3000	GLEEP		
6 NM Holding Pattern						ELEV 15			TDZE 14	
NONNU						Rwy 10 Idg 8071' Rwy 28 Idg 7375'				
CATEGORY	A	B	C	D	E					
LPV DA *	214-½		200	(200-½)						
LNAV/ VNAV DA **	520-1		506	(600-1)						
LNAV MDA ***	520-½ 506 (600-½)		520-1	506	(600-1)					
CIRCLING ****	520-1 505 (600-1)	540-1 525 (600-1)	540-1½ 525 (600-1½)	580-2	565	(600-2)				
HIRL Rwy 10-28 REIL Rwy 10-28 TDZL/CL Rwy 10-28										

RNAV (GPS) RWY 10

NE-3, 07 AUG 2025 to 04 SEP 2025

NE-3, 07 AUG 2025 to 04 SEP 2025