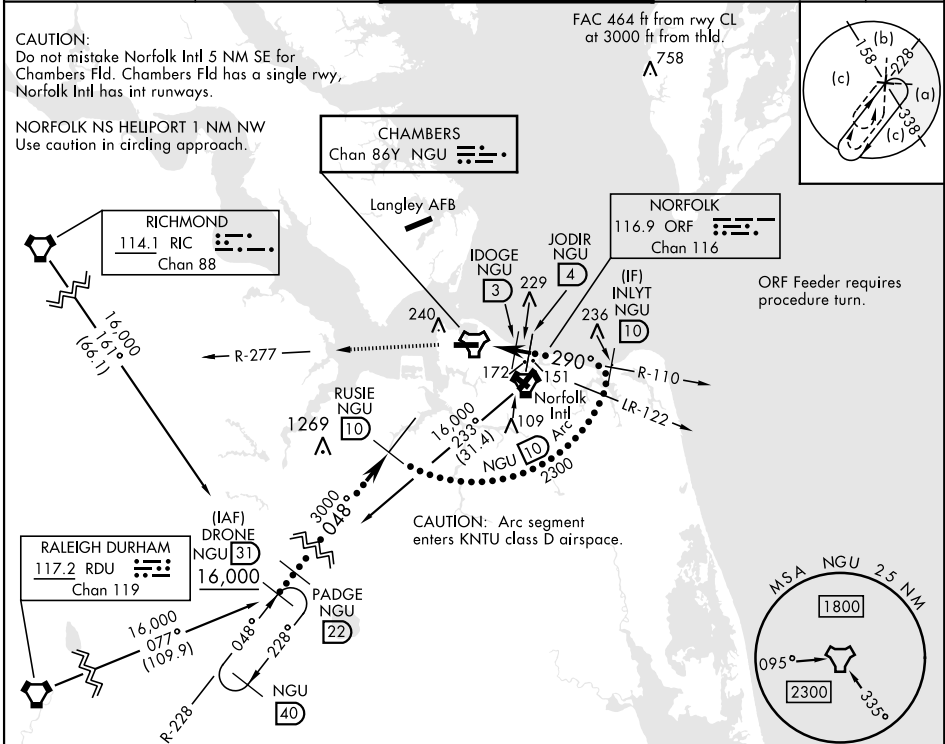


HI-TACAN Y RWY 28

TACAN NGU Chan 86Y	APCH CRS 290°	Rwy ldg TDZE Arpt Elev 7375 14 15	[USN]	NORFOLK NS (CHAMBERS FLD) (KNGU)
------------------------------	-------------------------	-----------------------------------------------------------------------	-------	----------------------------------

RADAR required	SSALF	MISSED APPROACH: Climb to 2300 on NGU TACAN R-277 then as directed by ATC.
▼ * When ALS inop, increase CAT CDE vis to 1 3/8 miles. ** Circling not authorized S of Rwy 10-28.	A4	

ATIS 118.425 338.225	APP CON 118.9 273.475	CHAMBERS TOWER 124.3 379.15	GND CON 121.8 370.85	ASR/PAR
--------------------------------	---------------------------------	---------------------------------------	--------------------------------	---------



EMERG SAFE ALT 100 NM 4100			ELEV 15	TDZE 14
2300 NGU R-277			Rwy 10 ldg 8071' Rwy 28 ldg 7375'	
			NORFOLK NS Heliport	
CATEGORY C D E			HIRL Rwy 10-28 REIL Rwy 10-28 TDZL/CL Rwy 10-28	
S-28 * 460-1 446 (500-1)				
CIRCLING ** 540-1 1/2 525 (600-1 1/2) 580-2 565 (600-2)				