

HI-TACAN Y RWY 10

TACAN NGU Chan 86Y	APCH CRS 097°	Rwy Idg 8071 TDZE 14 Arpt Elev 15
------------------------------	-------------------------	--------------------------------------------------------------

[USN]

NORFOLK NS (CHAMBERS FLD) (KNGU)

RADAR required

ALSF-2

MISSED APPROACH: Climbing left turn to 2300 on NGU TACAN R-053 then qs directed by ATC.

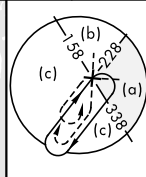
T * When ALS inop, increase CAT CDE vis to 13/8 miles.
 ** Circling not authorized S of Rwy 10-28.


ATIS 118.425 338.225	APP CON 118.9 273.475	CHAMBERS TOWER 124.3 379.15	GND CON 121.8 370.85	ASR/PAR
-------------------------	--------------------------	--------------------------------	-------------------------	---------

FAC 393' from rwy CL
at 3000' from thld.

NORFOLK NS HELIPORT 1 NM NW
Use caution in circling approach.

Δ⁷⁵⁸




RICHMOND
4.1 RIC 
Chan 88

CHAMBERS
Chan 86Y NGU


CAUTION: Intermediate segment length must be 5 NM less than minimum 6 NM for CAT CDE

Langley AFB

(IF) REGE
K RANY NGU
NGU 431

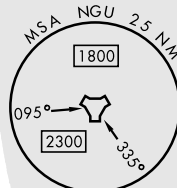
NORFOLK
6.9 ORF 
Chap 116

er requires
turn.

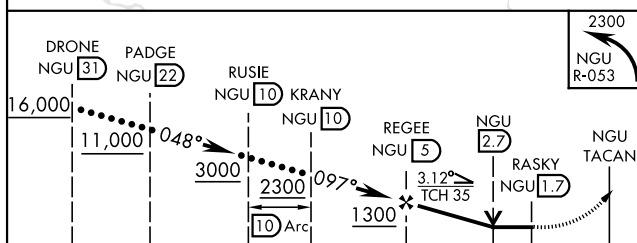
RALEIGH DURHAM
117.2 RDU 
Chap 119

(IAF)
DRONE
NGU 31

CAUTION: Do not mistake Norfolk Intl 5 NM SE for Chambers Fld. Chambers Fld has a single runway. Norfolk Intl has intersecting runways.



EMERG SAFE ALT 100 NM 4100

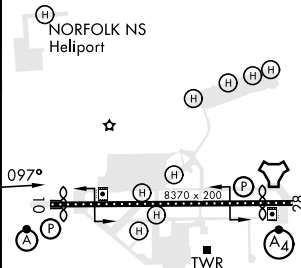


		← 3.3 NM →		0.5
CATEGORY	C	D	E	
S-10 *	520-1		506	(600-1)
C CIRCLING **	540-1½ 525 (600-1½)	580-2	565	(600-2)

ELEV	15	TDZE	14
------	----	------	----

Rwy 10 ldg 8071'
Rwy 28 ldg 7375'

H NORFOLK NS
Heliport



HIRL Rwy 10-28
REIL Rwy 10-28
TDZL/CL Rwy 10-28

NORFOLK, VIRGINIA
Orig 26JAN23

36° 56' N-76° 17' W

NORFOLK NS (CHAMBERS FLD) (KNGU)

HI-TACAN Y RWY 10