

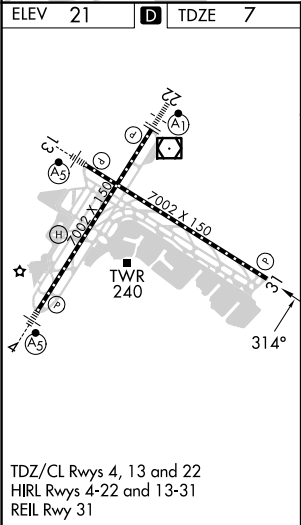
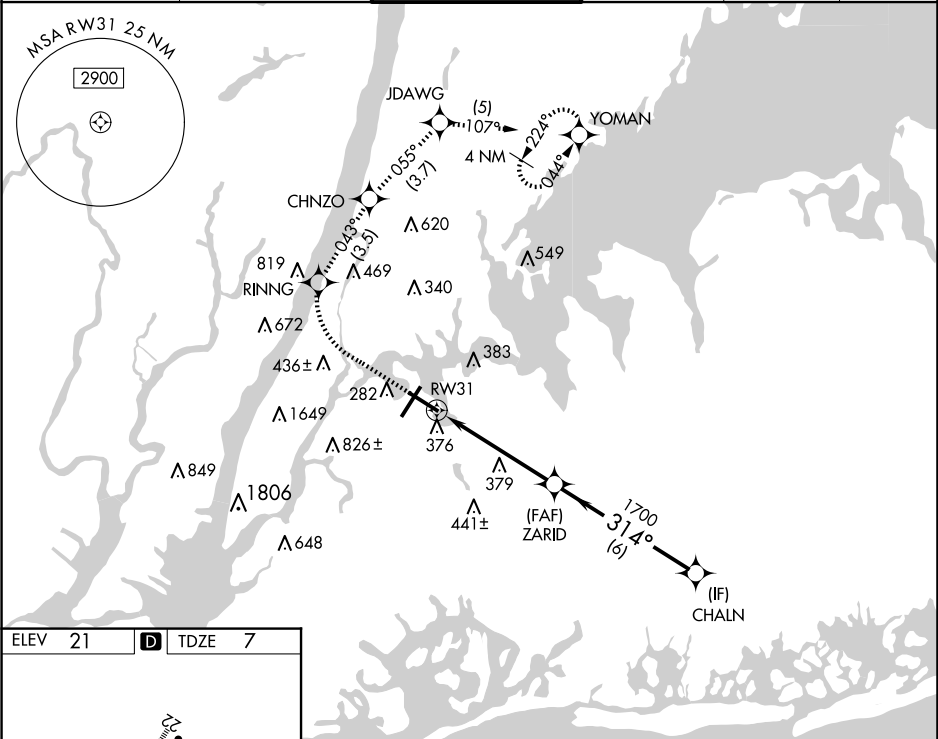
WAAS CH 48928 W31A	APP CRS 314°	Rwy Idg TDZE Apt Elev	7002 7 21
--	------------------------	-----------------------------	--------------------------------------

RNAV (GPS) Z RWY 31

LAGUARDIA (LGA)

RNP APCH - GPS.		MISSED APPROACH: (Do not exceed 210K until YOMAN) Climb to 620 then climbing right turn to 3000 direct RINNG and on track 043° to CHNZO and on track 055° to JDAWG and on track 107° to YOMAN and hold, continue climb-in-hold to 3000.	
▼ Rwy 31 helicopter visibility reduction below RVR 5000 NA. ▲ For uncompensated Baro-VNAV systems, LNAV/VNAV NA below -11°C or above 54°C. Circling NA northwest of Rwy 4 and southwest of Rwy 13.			

D-ATIS ARR	125.95	NEW YORK APP CON		LAGUARDIA TOWER		GND CON		CLNC DEL		CPDLC
D-ATIS DEP	127.05	120.8 263.0		118.7 263.0		121.7 263.0		135.2		



620	3000	RINNG	tr 043°	CHNZO	tr 055°	JDAWG	tr 107°	YOMAN	CHALN
VGSI and RNAV glidepath not coincident (VGSI Angle 3.00/ TCH 71).									
RW31									
ZARID 1700									
GP 3.10° TCH 50									
5 NM 6 NM									
CATEGORY	A		B		C		D		
LPV	DA		330/50		323 (400-1)				
LNAV/VNAV	DA		618-1¾		611 (600-1¾)				
LNAV MDA	640/55		633 (700-1)		640-1¾		633 (700-1¾)		
CIRCLING	680-1		659 (700-1)		700-2		760-2¼		
					679 (700-2)		739 (800-2¼)		