

WAAS CH 60918 W04A	APP CRS 044°	Rwy Idg 7002 TDZE 21 Apt Elev 21
--	------------------------	---

RNAV (GPS) Y RWY 4
LAGUARDIA (LGA)

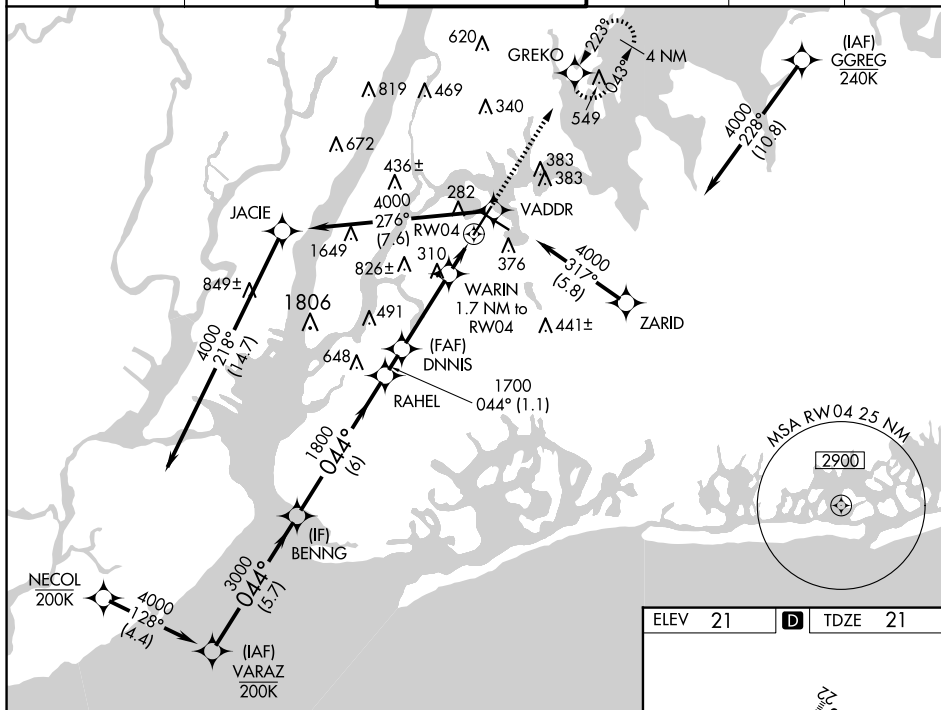
RNP APCH - GPS.

⚠ Rwy 4 helicopter visibility reduction below RVR 5000 NA. Inop table does not apply to LPV all Cats, and INAV Cat A and B. For uncompensated Baro-VNAV systems, INAV/VNAV NA below -12°C or above 54°C. For inop ALS, increase INAV/VNAV all Cats visibility to 1½ SM. Circling NA northwest of Rwy 4 and southwest of Rwy 13. Going below glidepath may not provide obstacle clearance inside DA. Crossing Rwy threshold below charted TCH may not provide required visual area obstacle clearance. *RVR 2400 authorized with FD or AP or HUD to DA.

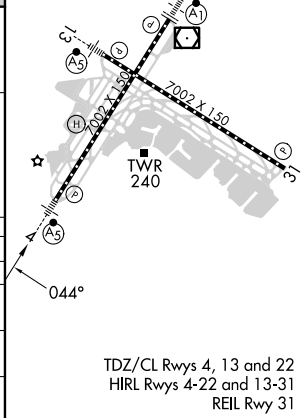
MALSP

MISSED APPROACH:
Climb to 2000 direct
GREKO and hold,
continue climb-in-hold
to 2000.

D-ATIS ARR	125.95	NEW YORK APP CON	LAGUARDIA TOWER		GND CON	CLNC DEL	CPDLC
D-ATIS DEP	127.05	120.8 263.0	118.7 263.0		121.7 263.0	135.2	



CATEGORY	A B C D
LPV DA*	271/40 250 (300-¾)
RNAV/ VNAV DA	499/50 478 (500-1)
RNAV MDA	560/50 539 (600-1) 560/55 539 (600-1)
C CIRCLING	680-1 659 (700-1) 700-2 679 (700-2) 760-2¼ 739 (800-2¼)



RNAV (GPS) Y RWY 4

NE-2, 07 AUG 2025 to 04 SEP 2025