

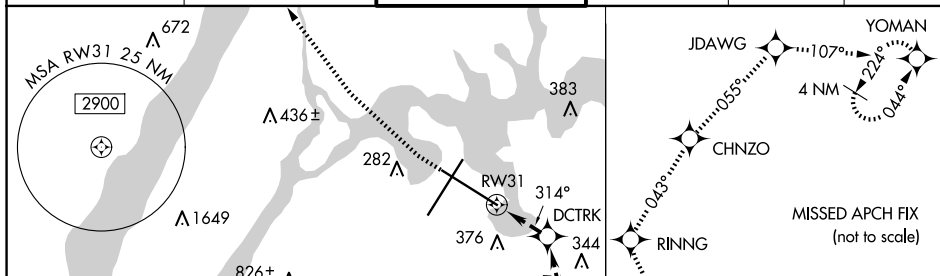
APP CRS	Rwy Idg	<b>7002</b>
<b>314°</b>	TDZE	<b>7</b>
	Apt Elev	<b>21</b>

RNAV (GPS) X RWY 31  
LAGUARDIA (LGA)

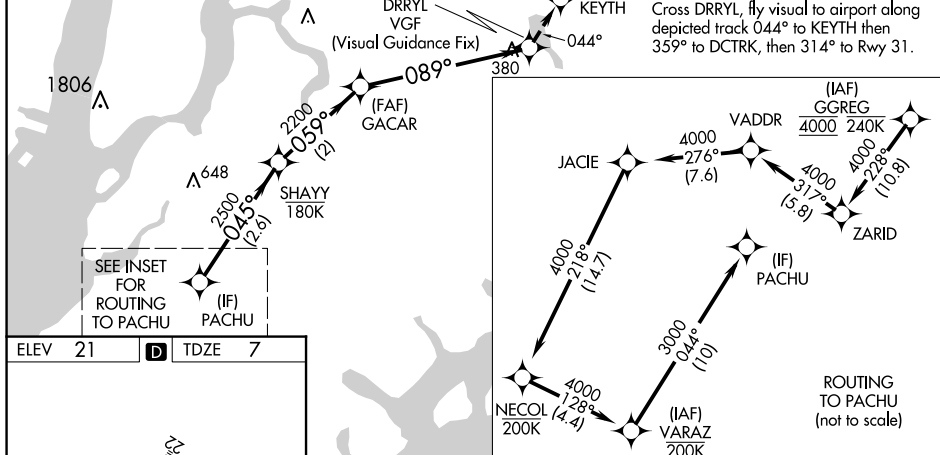
RNP APCH - GPS.
RADAR required.
<div> <div></div> <div></div> </div> Rwy 31 helicopter visibility reduction below $\frac{3}{4}$ SM NA.

**MISSED APPROACH:** (Do not exceed 165K until Rwy 31 and do not exceed 210K until YOMAN) Climbing right turn to 3000 direct RINNG and on track 043° to CHNZO and on track 055° to JDAWG and on track 107° to YOMAN and hold.

D-ATIS ARR	<b>125.95</b>	NEW YORK APP CON		LAGUARDIA TOWER		GND CON		CLNC DEL		CPDLC
D-ATIS DEP	<b>127.05</b>	<b>120.8 263.0</b>		<b>118.7 263.0</b>		<b>121.7 263.0</b>		<b>135.2</b>		



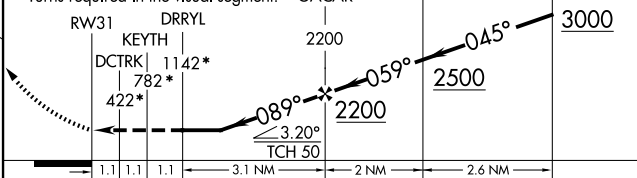
Cross DRRYL, fly visual to airport along depicted track 044° to KEYTH then 359° to DCTRK, then 314° to Rwy 31.



3000	RINNG	tr 043°	CHNZO	tr 055°	JDAWG	tr 107°	YOMAN	* Check ALT.
------	-------	------------	-------	------------	-------	------------	-------	--------------

VGSI and descent angles not coincident  
(VGSI Angle 3.00/TCH 71).

Turns required in the visual segment.



CATEGORY	A	B	C	D
LNAV MDA	1160-4 1153 (1200-4)			

NEW YORK, NEW YORK

Amdt 1 20MAR25

40°47'N-73°52'W

LAGUARDIA (LGA)

RNAV (GPS) X RWY 31

NE-2, 07 AUG 2025 to 04 SEP 2025

NE-2, 07 AUG 2025 to 04 SEP 2025