

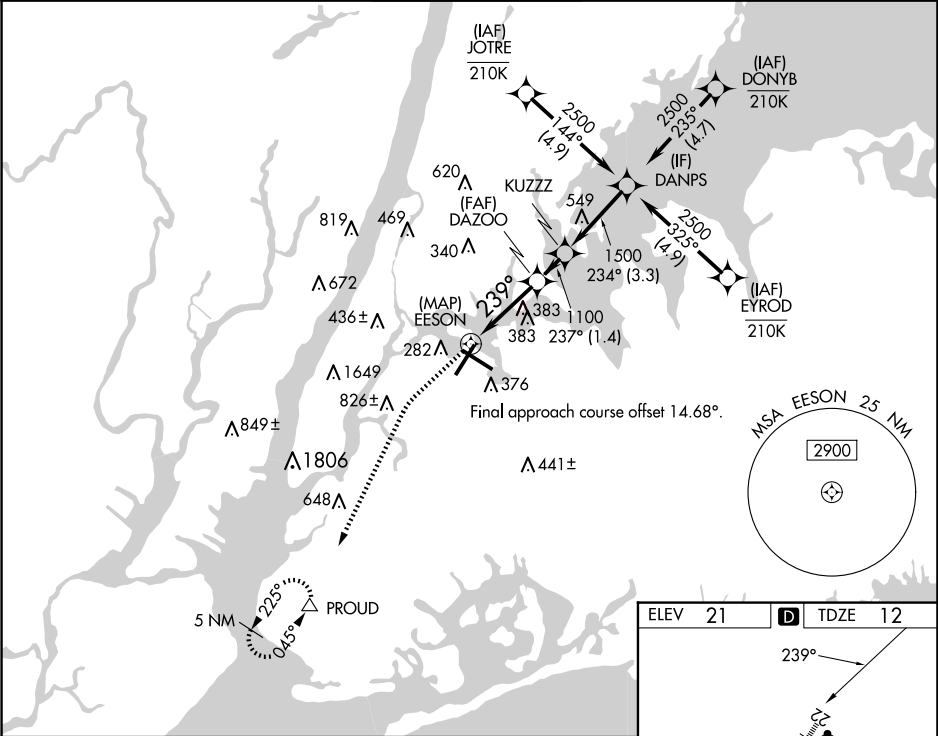
APP CRS	Rwly Idg	7002
239°	TDZE	12
	Apt Elev	21

RNAV (GPS) X RWY 22

LAGUARDIA (LGA)

RNP APCH - GPS.		ALSF-1	MISSED APPROACH: Climb to 500 then climbing left turn to 3000 direct PROUD and hold, continue climb-in-hold to 3000.
Circling NA northwest of Rwy 4 and southwest of Rwy 13. For uncompensated Baro-VNAV systems, LNAV/VNAV NA below -11°C or above 54°C. For inop ALS, increase LNAV/VNAV all Cats visibility to RVR 5500; increase LNAV Cats C/D visibility to 1½ SM.		A1	

D-ATIS ARR	125.95	NEW YORK APP CON		LAGUARDIA TOWER		GND CON		CLNC DEL		CPDLC
D-ATIS DEP	127.05	120.8 263.0		118.7 263.0		121.7 263.0		135.2		



VGSI and descent angles not coincident (VGSI Angle 3.00/TCH 67).					500	3000	PROUD
DANPS	2500	234°	1500	237°	1100	239°	EESON
GP 3.00°	TCH 50	3.3 NM	1.4 NM	1.5 NM	1.8 NM	1.8 NM to EESON	
CATEGORY	A	B	C	D			
LNAV/VNAV DA	381/35		369 (400-5%)				
LNAV MDA	640/24	628 (700-½)	640-1⅓	628 (700-1⅓)			
CIRCLING	680-1	659 (700-1)	700-2 679 (700-2)	760-2¼ 739 (800-2¼)			

