

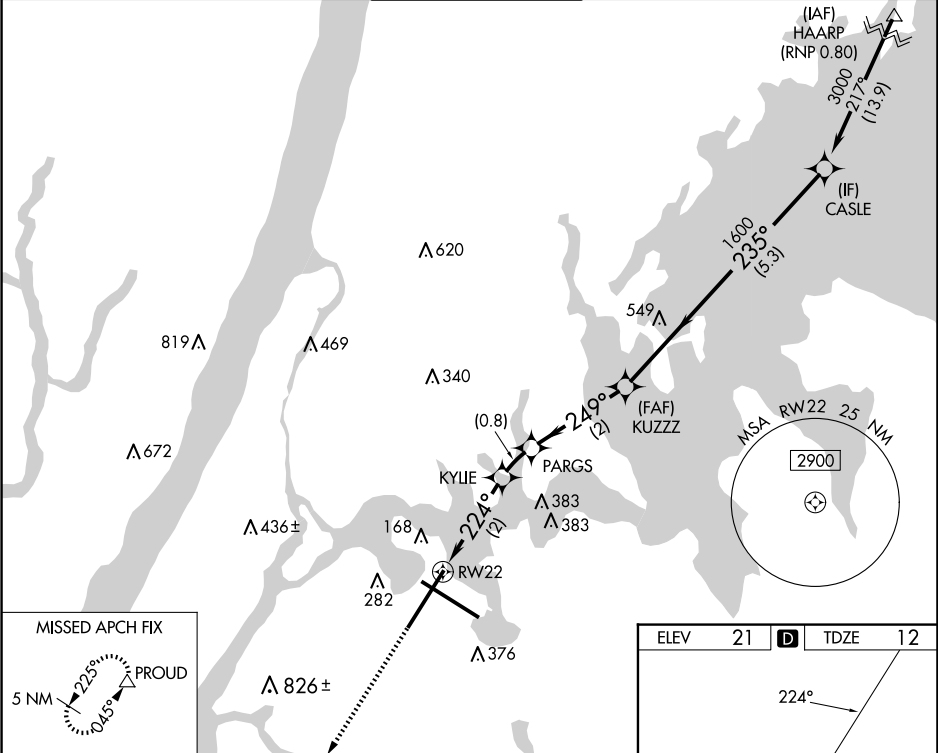
APP CRS	Rwy Idg	7002
224°	TDZE	12
	Apt Elev	21

RNAV (RNP) Z RWY 22

LAGUARDIA (LGA)

RNP AR APCH - GPS. RF required.		ALSIF-1 	MISSED APPROACH: Climb to 3000 direct PROUD and hold, continue climb-in-hold to 3000. *Missed approach requires minimum climb of 397 feet per NM to 560.
	For uncompensated Baro-VNAV systems, procedure NA below -11°C or above 54°C. For inop ALS, increase RNP 0.30 DA* visibility to RVR 5500.		

D-ATIS ARR	125.95	NEW YORK APP CON	120.8 263.0	LAGUARDIA TOWER	118.7 263.0	GND CON	121.7 263.0	CLNC DEL	135.2	CPDLC	
D-ATIS DEP	127.05										



<div>3000</div> <div>PROUD</div>		VGSI and RNAV glidepath not coincident (VGSI Angle 3.00/TCH 67).			
<div><div></div><div></div></div>		<div>KUZZZ</div> <div>CASLE</div>			
		<div>KYLIE</div>	<div>PARGS</div>	<div>1600</div>	<div>3000</div>
		<div>704</div>	<div>947</div>	<div>235°</div>	
<div><div></div><div></div></div>		<div>224°</div>	<div>249°</div>	<div>1600</div>	
		<div>2 NM</div>	<div>0.8 NM</div>	<div>2 NM</div>	<div>5.3 NM</div>
CATEGORY		A	B	C	D
RNP 0.30 DA*		384/35		372 (400-5%)	
RNP 0.30 DA		445/40		433 (500-3%)	

