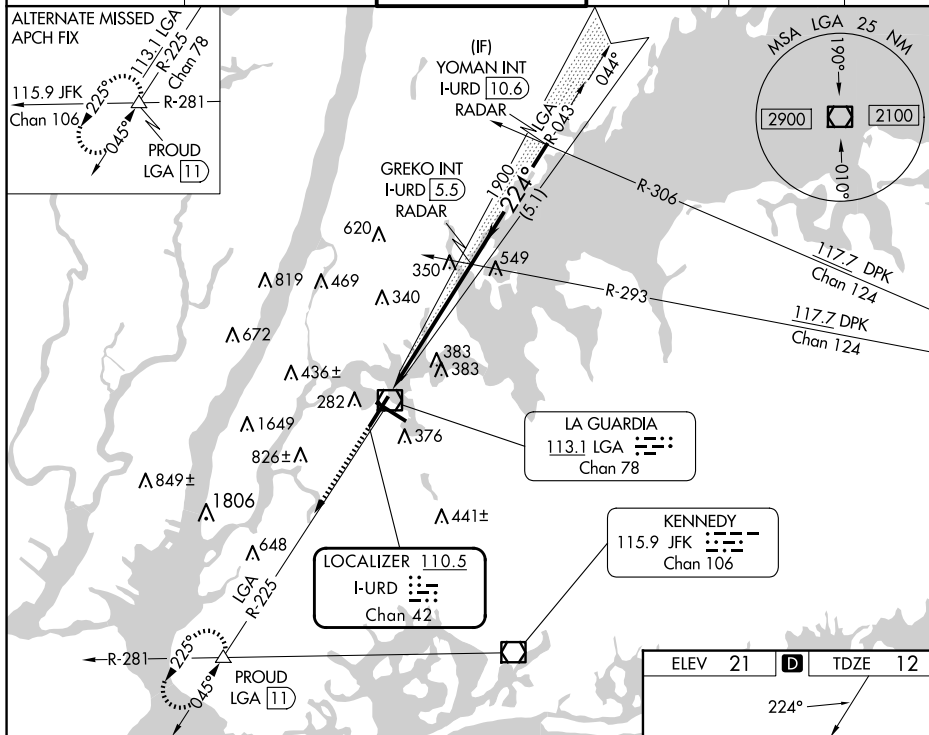
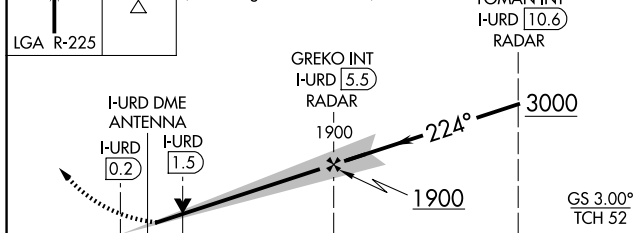


ILS or LOC RWY 22
LAGUARDIA (LGA)

MISSED APPROACH: Climb to 3000 on LGA VOR/DME R-225 to PROUD INT/LGA 11 DME and hold, continue climb-in-hold to 3000.



3000 ↑ LGA R-225	PROUD △
------------------------	----------------



ILS or LOC RWY 22