

LOC/DME I-GDI	APP CRS	Rwy Idg	7002
108.5	134°	TDZE	12
Chan 22		Apt Elev	21

ILS or LOC RWY 13

LAGUARDIA (LGA)

Radar required for procedure entry. DME or RADAR required for LOC only.

▼

For inop ALS, increase S-LOC 13 Cats C/D visibility to 2½ SM.

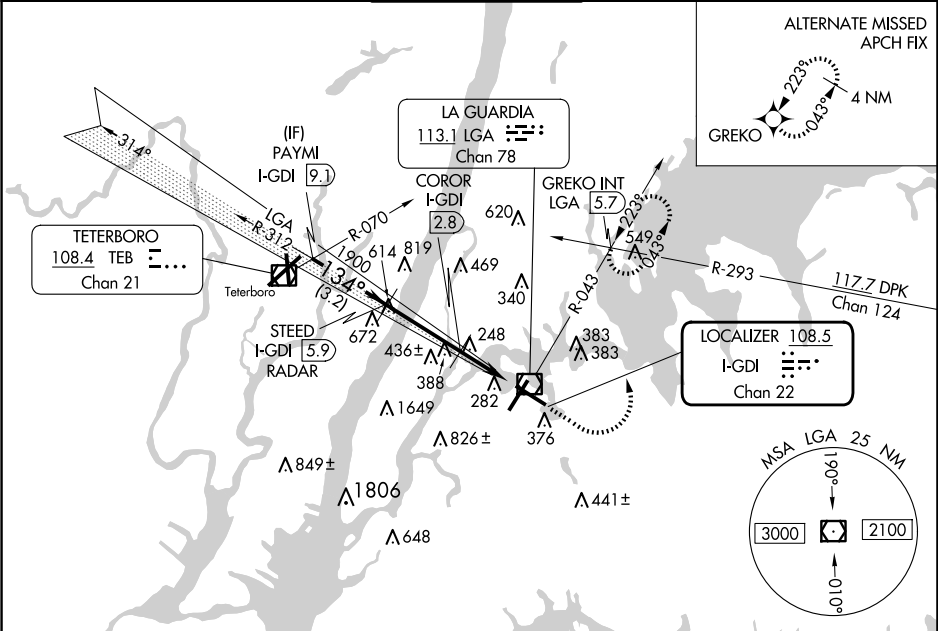
▲

Circling NA northwest of Rwy 4 and southwest of Rwy 13.

MALSR

MISSED APPROACH: Climb to 800 then climbing left turn to 2000 on LGA VOR/DME R-043 to GREKO INT/LGA 5.7 DME and hold, continue climb-in-hold to 2000.

D-ATIS ARR 125.95	NEW YORK APP CON 120.8 263.0	LAGUARDIA TOWER 118.7 263.0	GND CON 121.7 263.0	CLNC DEL 135.2	CPDLC
D-ATIS DEP 127.05					



VGSI and ILS glidepath not coincident (VGSI Angle 3.10/TCH 55).					ELEV 21		D		TDZE 12	
<div><div>PAYMI I-GDI 9.1</div><div>STEED I-GDI 5.9 RADAR</div><div>COROR I-GDI 2.8</div><div>I-GDI 1.7</div></div> <div>800 2000</div> <div>GREKO INT</div> <div>*1900 when assigned by ATC</div> <div>GS 3.10° TCH 49°</div> <div>134°</div> <div>1900</div> <div>800</div> <div>3.2 NM 3.1 NM 1.1 NM 1.3 NM</div>					<div><div>134°</div><div>22</div><div>7002 X 150</div><div>TWR 240</div><div>TDZ/CL Rws 4, 13 and 22</div><div>HIRL Rws 4-22 and 13-31</div><div>REIL Rwy 31</div></div>					
CATEGORY	A		B		C		D			
S-ILS 13	212/18				200 (200-½)					
S-LOC 13	800/24 788 (800-½)		800/40 788 (800-¾)		800-1¾		788 (800-1¾)			
CIRCLING	800-1 779 (800-1)		800-1¼ 779 (800-1¼)		1080-3 1059 (1100-3)		1260-3 1239 (1300-3)			
COROR FIX MINIMUMS										
S-LOC 13	500/24		488 (500-½)		500/50		488 (500-1)			
CIRCLING	700-1		679 (700-1)		1080-3 1059 (1100-3)		1260-3 1239 (1300-3)			
					FAF to MAP 5.5 NM					
					Knots	60	90	120	150	180
					Min:Sec	5:30	3:40	2:45	2:12	1:50

NE-2, 07 AUG 2025 to 04 SEP 2025

NE-2, 07 AUG 2025 to 04 SEP 2025