

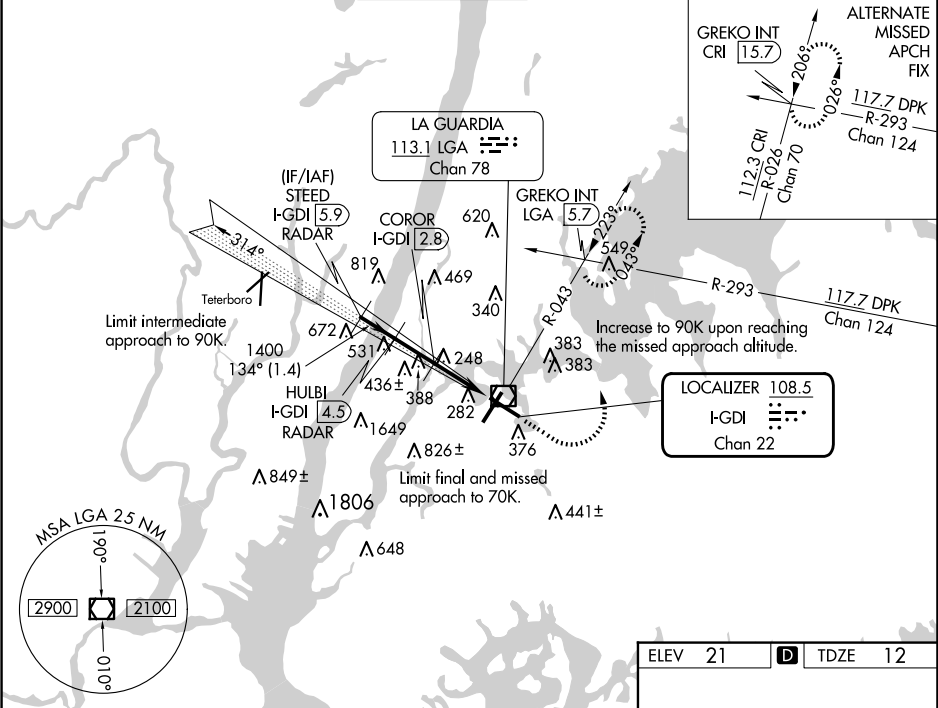
LOC/DME I-GDI	APP CRS	Rwy Idg	7002
108.5	134°	TDZE	12
Chan 22		Apt Elev	21

COPTER ILS or LOC RWY 13

LAGUARDIA (LGA)

RADAR required for procedure entry. DME or RADAR required.	MALSR	MISSED APPROACH: Climb to 800 then climbing left turn to 2000 on LGA VOR/DME R-043 to GREKO INT/LGA 5.7 DME and hold, continue climb-in-hold to 2000.

D-ATIS ARR 125.95 D-ATIS DEP 127.05	NEW YORK APP CON 120.8 263.0	LAGUARDIA TOWER 118.7 263.0	GND CON 121.7 263.0	CLNC DEL 135.2 121.875 (COPTER)	CPDLC
----------------------------------------	------------------------------	-----------------------------	---------------------	------------------------------------	-------



VGSI and ILS glidepath not coincident (VGSI Angle 3.10/TCH 55).		800 ↑	2000 ↘ LGA R-043	GREKO INT
STEED I-GDI <u>5.9</u> RADAR	HULBI I-GDI <u>4.5</u> RADAR	*LOC only.		
2500	1400	COROR I-GDI <u>2.8</u>	*I-GDI <u>1.7</u>	I-GDI <u>0.4</u>
GS 3.10° HCH 49				
Intermediate descent gradient is 765 feet/NM.				
1.4 NM 1.7 NM 1.1 NM 1.3 NM				
CATEGORY	COPTER			
H-ILS 13	212/12 200 (200-¼)			
H-LOC 13	700/12 688 (700-¼)			
COROR FIX MINIMUMS				
H-LOC 13	500/12 488 (500-¼)			

