

WAAS CH <b>86913</b> <b>W36A</b>	APP CRS <b>357°</b>	Rwy Idg <b>5135</b> TDZE <b>8</b> Apt Elev <b>8</b>
--	------------------------	---

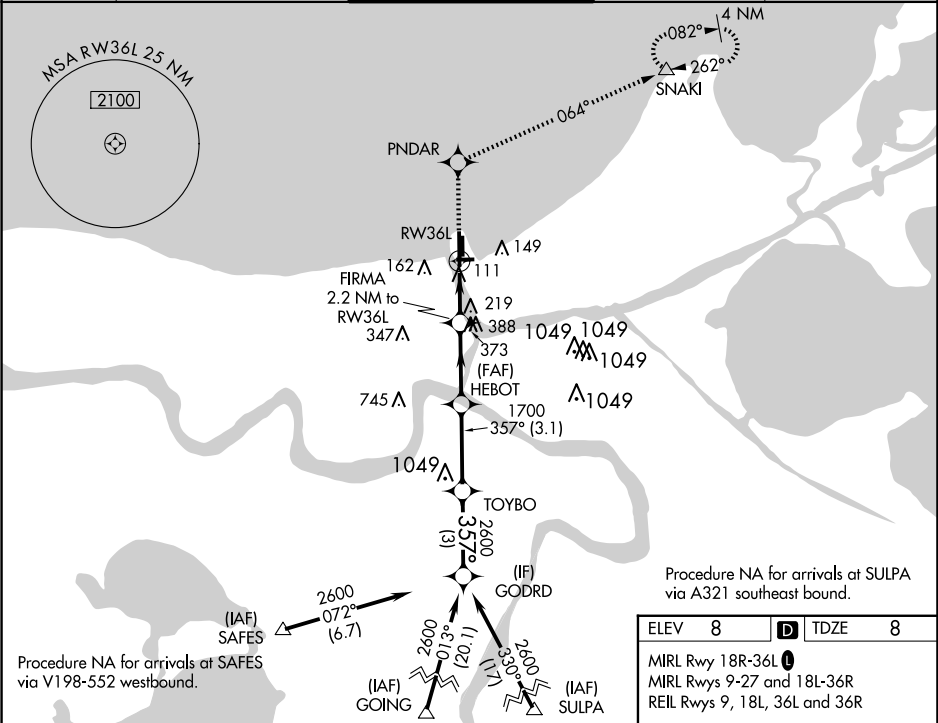
RNAV (GPS) RWY 36L

LAKEFRONT (NEW)

⚠ For uncompensated Baro-VNAV systems, LNAV/VNAV NA below -15°C (5°F) or above 49°C (120°F). DME/DME RNP-0.3 NA. When local altimeter setting not received, use Louis Armstrong New Orleans Intl altimeter setting: increase LPV DA to 369 feet, LNAV/VNAV DA to 460 feet and all visibilities ½ mile; increase all MDA 40 feet and Circling Cat D visibility ½ mile. VDP and Baro-VNAV NA when using Louis Armstrong New Orleans Intl altimeter setting.

MISSED APPROACH: Climb to 2100 direct PNDAR and via track 064° to SNAKI and hold.

ATIS <b>124.9</b>	NEW ORLEANS APP CON NORTH <b>133.15 290.3</b> SOUTH <b>123.85 256.9</b>	LAKEFRONT TOWER ★ <b>118.95(CTAF) 0</b>	GND CON <b>121.7 335.575</b>	CLNC DEL <b>127.4</b>
----------------------	---	--	---------------------------------	--------------------------



ELEV <b>8</b>	<b>D</b> TDZE <b>8</b>
MIRL Rwy 18R-36L <b>0</b>	
MIRL Rwy 9-27 and 18L-36R	
REIL Rwy 9, 18L, 36L and 36R	

2100	PNDAR	tr 064°	SNAKI	Procedure Turn NA
*LNAV only.				
FIRMA 2.2 NM to RWY 36L				
HEBOT				
TOYBO				
GODRD				
RW36L 1.7 NM to RW36L				
GP 3.00° TCH 50				
CATEGORY	A	B	C	D
LPV DA	340-1⅛ 332 (400-1⅛)			
LNAV/VNAV DA	431-1⅜ 423 (500-1⅜)			
LNAV MDA	600-1 592 (600-1)		600-1¾ 592 (600-1¾)	
CIRCLING	600-1 592 (600-1)		700-2 692 (700-2) 820-2¾ 812 (900-2¾)	

