

LOC/DME I-NEW	APP CRS	Rwy Idg	5510
111.3	177°	TDZE	8
Chan 50		Apt Elev	8

ILS or LOC RWY 18R

LAKEFRONT (NEW)

▼

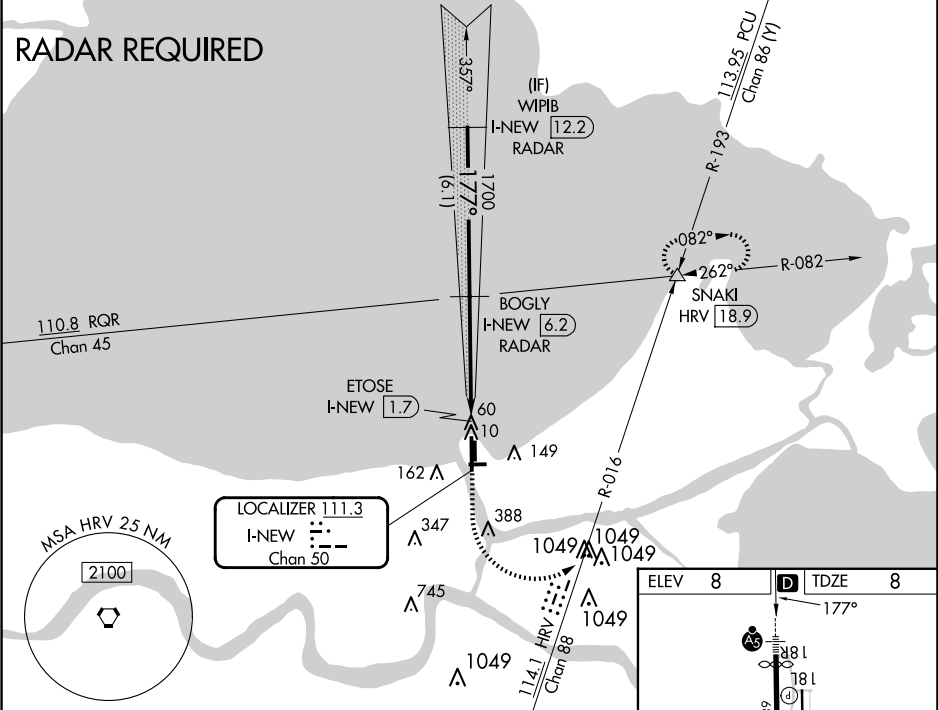
▲

Inop table does not apply to S-ILS 18R. For inop MALSR when using Louis Armstrong New Orleans Intl altimeter setting, increase S-LOC 18R Cats A-C visibility to 1 mile. For inop MALSR, increase S-LOC 18R all Cats visibility to 1 mile. DME or RADAR required. Visibility reduction by helicopters NA. When local altimeter setting not received, use Louis Armstrong New Orleans Intl altimeter setting and increase all DA 29 feet and all MDA 40 feet; increase Circling Cat D visibility ¼ mile.

MALSR

MISSED APPROACH: Climb to 500 then climbing left turn to 2100 on HRV VORTAC R-016 to SNAKI INT and hold.

ATIS 124.9	NEW ORLEANS APP CON NORTH 133.15 290.3 SOUTH 123.85 256.9	LAKEFRONT TOWER ★ 118.95 (CTAF) 0	GND CON 121.7 335.575	CLNC DEL 127.4
---------------	---	--------------------------------------	--------------------------	-------------------



WPIB I-NEW 12.2 RADAR

BOGLY I-NEW 6.2 RADAR

ETOSE I-NEW 1.7

500 2100 HRV R-016

SNAKI

Procedure Turn NA

1700 177°

GS 3.00° TCH 48

6.1 NM 4.5 NM 0.6

CATEGORY	A	B	C	D
S-ILS 18R	258-3/4 250 (300-3/4)			
S-LOC 18R	320-3/4 312 (400-3/4)			
CIRCLING	480-1 472 (500-1)	520-1 512 (600-1)	700-2 692 (700-2)	820-2 3/4 812 (900-2 3/4)

ELEV 8 TDZE 8

177°

181 181 369 X 75 36R 3114 X 75 36L 274+ 97

TWR 122

MRL Rwy 18R-36L

MRL Rwy 9-27 and 18L-36R

REIL Rwy 9, 18L, 36L and 36R

FAF to MAP 4.5 NM

Knots	60	90	120	150	180
Min:Sec	4:30	3:00	2:15	1:48	1:30