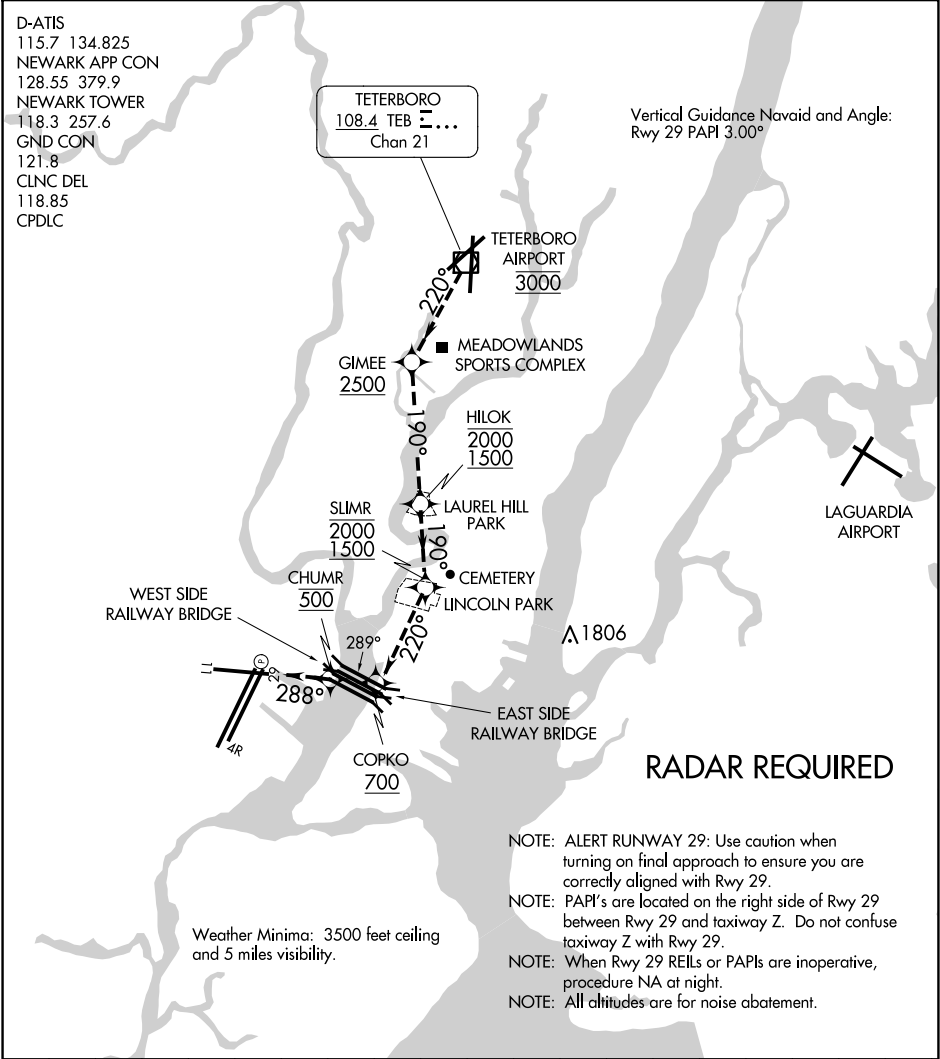


STADIUM VISUAL RWY 29

NEWARK LIBERTY INTL (EWR)
NEWARK, NEW JERSEY

AL-285 (FAA)



NE-2, 07 AUG 2025 to 04 SEP 2025

NE-2, 07 AUG 2025 to 04 SEP 2025

NM	1	2	3	4	5	6	7	8	9	10	11	12	13	14	15	16	17	18	19
----	---	---	---	---	---	---	---	---	---	----	----	----	----	----	----	----	----	----	----

STADIUM VISUAL RUNWAY 29

When cleared for the Stadium Visual Approach proceed direct to Teterboro Airport/VOR DME and cross it at 3000' proceed on 220° heading to west end of Meadowland Sports Complex (GIMEE). Cross GIMEE at or above 2500'. Turn left at the west end of Meadowland Sports Complex (GIMEE) on heading 190° and continue along left (east) side of river to Laurel Hill Park (HILOK), cross HILOK between 2000' and 1500'. Continue along left (east) size of river heading 190° to Lincoln Park (SLIMR). Cross SLIMR between 2000' and 1500'. Continue southwest along the east side heading 220° to the east side of the railway bridge (COPKO) at or above 700' then turn right heading 288° to cross the west side of the railway bridge (CHUMR) at 500'. Plan to be in final landing configuration by Lincoln Park.

STADIUM VISUAL RWY 29

40°42'N-74°10'W

NEWARK, NEW JERSEY
NEWARK LIBERTY INTL (EWR)