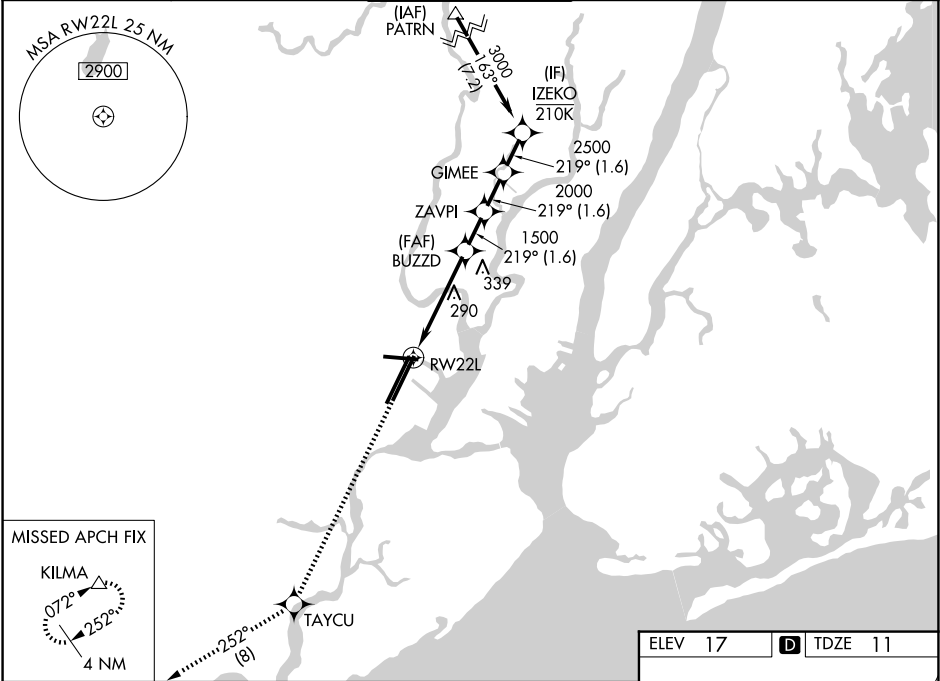


WAAS CH 70324 W22A	APP CRS 219°	Rwy Ldg 8205 TDZE 11 Apt Elev 17
----------------------------------------	------------------------	-------------------------------------------------------------

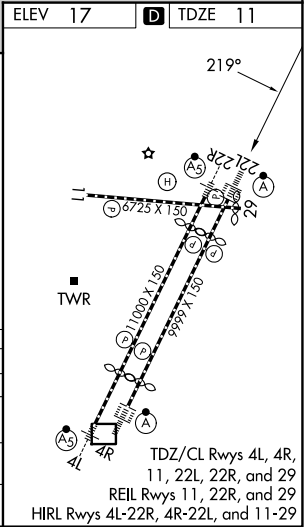
RNAV (GPS) Z RWY 22L

NEWARK LIBERTY INTL (EWR)

RNP APCH - GPS.		ALSIF-2	MISSED APPROACH: Climb to 3000 direct TAYCU and on track 252° to KILMA and hold.		
D-ATIS 115.7 134.825		NEWARK APP CON 128.55 379.9	NEWARK TOWER 118.3 257.6	GND CON 121.8	CLNC DEL 118.85
				CPDLC	



3000	TAYCU	tr 252°	KILMA	VGSI and RNAV glidepath not coincident (VGSI Angle 3.00°/TCH 60°).			
↑	✱		△				
RW22L 1.5 NM to RW22L 1.5 NM 3 NM 1.6 NM 1.6 NM 1.6 NM							
GP 3.00° TCH 43							
CATEGORY		A		B		C D	
LPV DA		211/18 200 (200-½)					
LNAV/VNAV DA		462/45 451 (500-¾)					
LNAV MDA		560/24 549 (600-½)			560/60 549 (600-1¼)		
CIRCLING		660-1 643 (700-1)		900-2¾ 883 (900-2¾)		900-3 883 (900-3)	



RNAV (GPS) Z RWY 22L

NE-2, 07 AUG 2025 to 04 SEP 2025

NE-2, 07 AUG 2025 to 04 SEP 2025