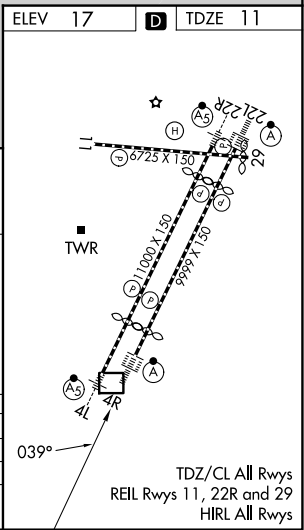
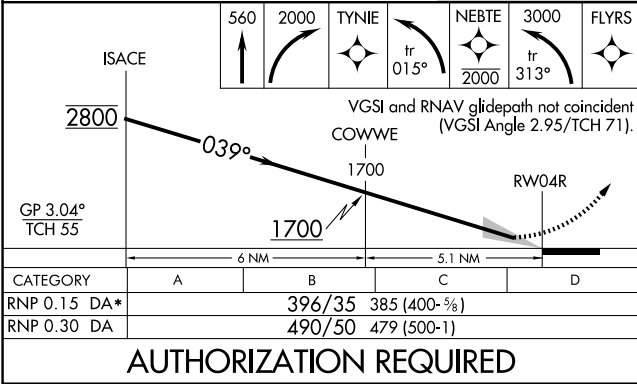
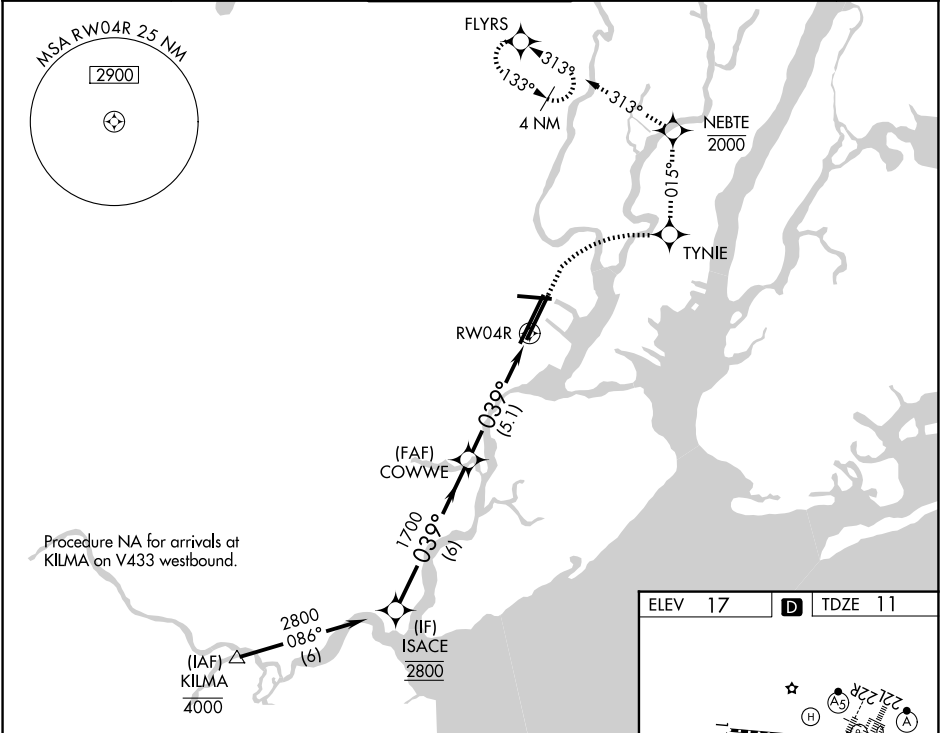


APP CRS	Rwy Ldg	8809
039°	TDZE	11
	Apt Elev	17

RNAV (RNP) Z RWY 4R  
NEWARK LIBERTY INTL (EWR)

RNP AR APCH.		<div>ALSF-2</div> <div><div><div></div><div></div><div></div><div></div><div></div></div><div><div></div><div></div><div></div><div></div><div></div></div></div>	<div>MISSED APPROACH: (Do not exceed 210K until NEBTE) Climb to 560 then climbing right turn to 2000 direct TYNIE and left turn on track 015° to NEBTE, cross NEBTE at or below 2000 then climbing left turn to 3000 on track 313° to FLYRS and hold, continue climb-in-hold to 3000. * Missed approach requires minimum climb of 351 feet per NM to 660.</div>					
RADAR required.								
<div><div><div>▼</div><div>▲</div></div><div>For uncompensated Baro-VNAV systems, procedure NA below -12°C or above 54°C. For inop ALS, increase RNP 0.30 all Cats visibility to 1½ SM.</div></div>								
D-ATIS		NEWARK APP CON		NEWARK TOWER		GND CON	CLNC DEL	CPDLC
115.7 134.825		128.55 379.9		118.3 257.6		121.8	118.85	



RNAV (RNP) Z RWY 4R