

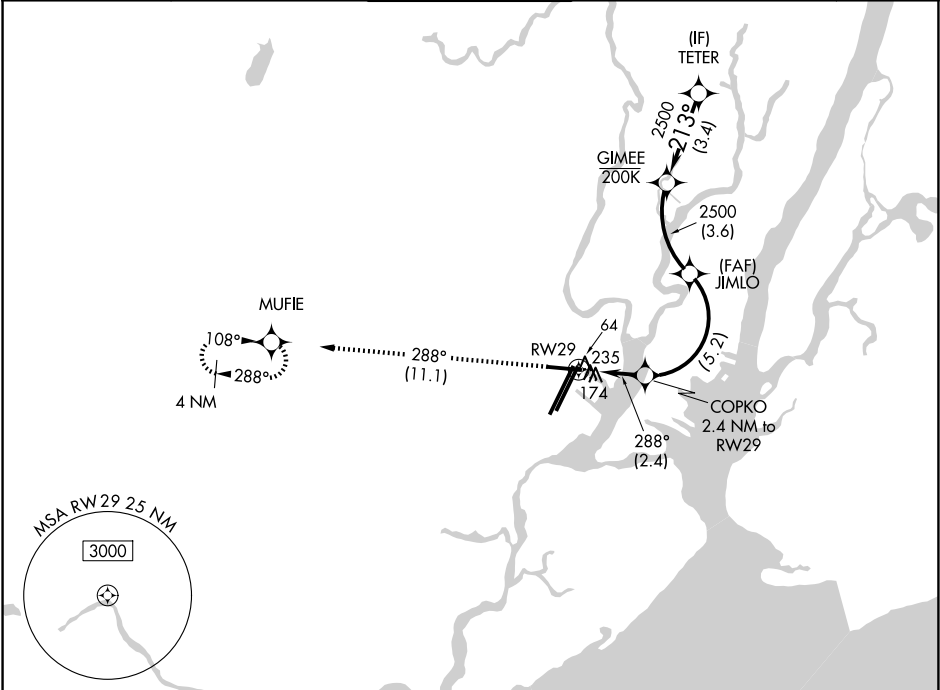
APP CRS	Rwy Ldg	6501
288°	TDZE	10
	Apt Elev	18

RNAV (RNP) Y RWY 29

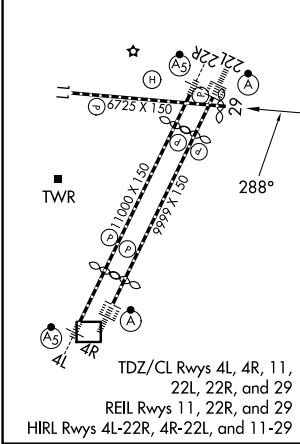
NEWARK LIBERTY INTL (EWR)

RNP AR APCH. RF required.			MISSED APPROACH: Climb to 2000 on track 288° to MUFIE and hold.		
Straight-in Rwy 29 at night, operational VGSI required, remain on or above VGSI glidepath until threshold. For uncompensated Baro-VNAV systems, procedure NA below -12°C or above 54°C. **Missed approach requires a minimum climb of 417 feet per NM to 800.					

D-ATIS	NEWARK APP CON	NEWARK TOWER	GND CON	CLNC DEL	CPDLC
115.7 134.825	128.55 379.9	118.3 257.6	121.8	118.85	



ELEV	18	TDZE	10
------	----	------	----



2000		MUFIE	
tr 288°			
COPKO 2.4 NM to RWY 29		JIMLO 2500	
RWY 29 834		GIMEE 2500	
288°		213°	
2.4		3.4 NM	
5.2 NM		3.6 NM	
CATEGORY		A	
RNP 0.16 DA		461-1½ 451 (500-1½)	
RNP 0.30 DA		** 530-1¾ 520 (600-1¾)	
RNP 0.30 DA		573-1⅞ 563 (600-1⅞)	
TCH 60		GP 3.00°	

RNAV (RNP) Y RWY 29

NE-2, 07 AUG 2025 to 04 SEP 2025

NE-2, 07 AUG 2025 to 04 SEP 2025