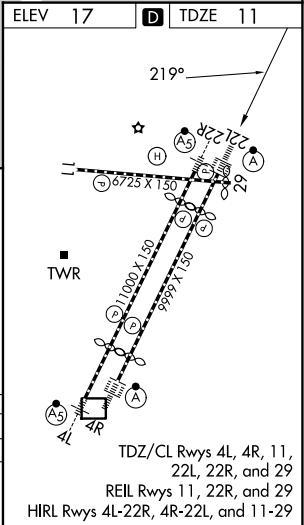
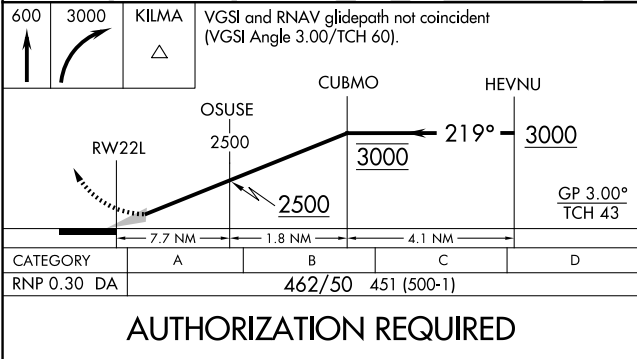
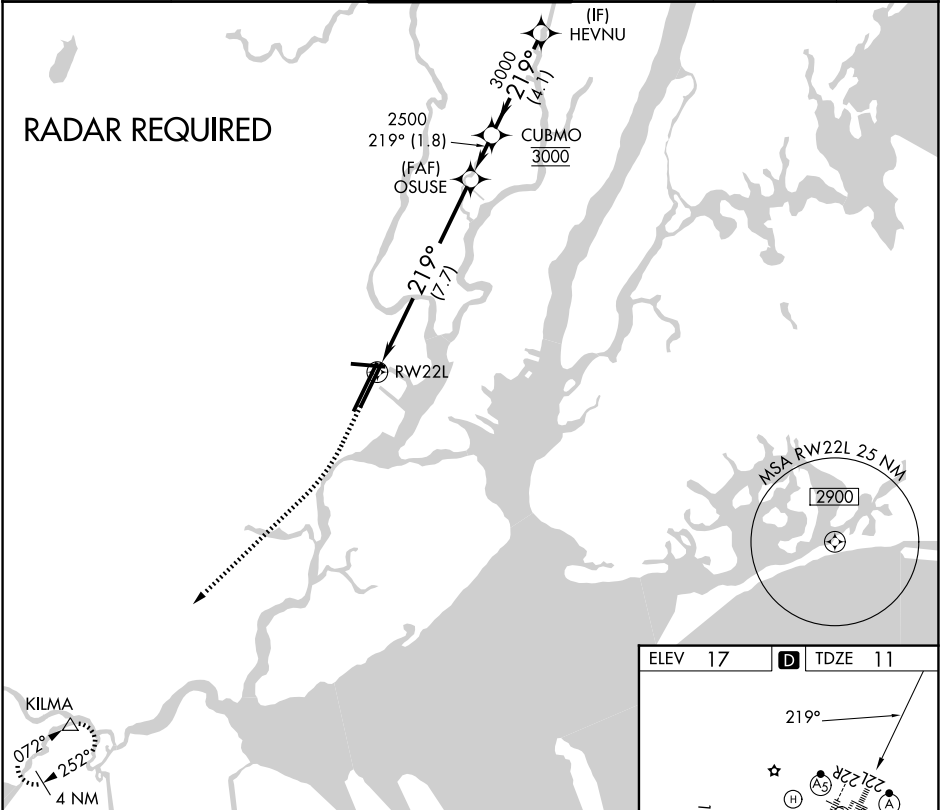


APP CRS	Rwy Ldg	8205
219°	TDZE	11
	Apt Elev	17

RNAV (RNP) Y RWY 22L
NEWARK LIBERTY INTL (EWR)

RNP AR APCH - GPS.		ALSF-2	MISSED APPROACH: Climb to 600 then climbing right turn to 3000 direct KILMA and hold.		
For uncompensated Baro-VNAV systems, procedure NA below -13°C or above 54°C.					
D-ATIS	NEWARK APP CON	NEWARK TOWER	GND CON	CLNC DEL	CPDLC
115.7 134.825	128.55 379.9	118.3 257.6	121.8	118.85	



RNAV (RNP) Y RWY 22L

NE-2, 07 AUG 2025 to 04 SEP 2025

NE-2, 07 AUG 2025 to 04 SEP 2025