

WAAS CH 61244 W22B	APP CRS 219°	Rwy Ldg 9559 TDZE 10 Apt Elev 17
----------------------------------------	------------------------	-------------------------------------------------------------

RNAV (GPS) RWY 22R

NEWARK LIBERTY INTL (EWR)

RNP APCH - GPS

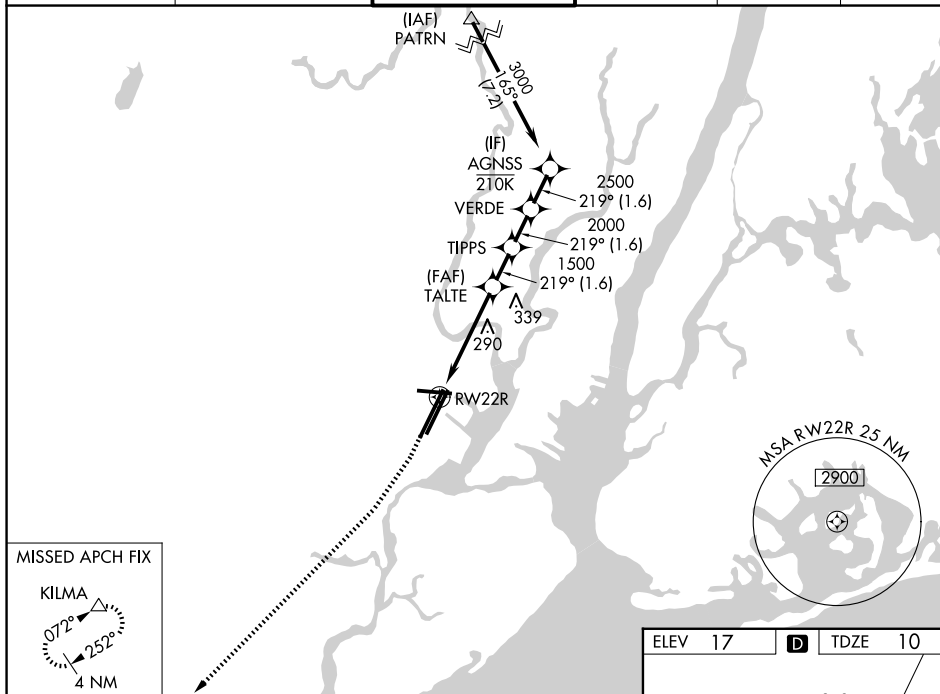
T Circling NA south of Rwy 11-29. When Circling to Rwy 29 at night, operational VGSI required, remain on or above VGSI glidepath until threshold. For uncompensated Baro-VNAV systems, LNAV/VNAV NA below -12°C or above 54°C.

MALS




MISSED APPROACH: Climb to 2000, then climbing right turn to 3000 direct KILMA and hold.

D-ATIS	NEWARK APP CON	NEWARK TOWER	GND CON	CLNC DEL	CPDLC
115.7 134.825	128.55 379.9	118.3 257.6	121.8	118.85	



MISSED APCH FIX



2000	3000	KILMA
↑	↗	△

VGSI and RNAV glidepath not coincident (VGSI Angle 3.10/TCH 66).

AGNSS

VERDE

1.

25

0	
---	--

--	--

[illegible]

--	--	--

$$M \rightarrow 1.$$

C

200-1/2)

500-7%)

555 707

560/

00-23/

3 (900-2

0040/NI

0 42 14-

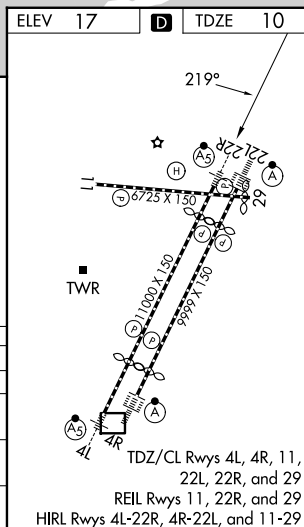
NEWARK, NEW JERSEY

Amdt 2 23FEB23

40°42'N-74°10'W

NEWARK LIBERTY INTL (EWR)

RNAV (GPS) RWY 22R



NE-2, 07 AUG 2025 to 04 SEP 2025